

Company Data

Company Outline

(As of March 31, 2022)

Company Name	Penta-Ocean Construction Co., Ltd.
Founded	April 1896
Established	April 1950
Headquarters	2-8, Koraku 2-chome, Bunkyo-ku, Tokyo 112-8576, Japan Tel: 81-3-3817-7181 Fax: 81-3-3817-7642
Paid-in Capital	¥30,450 million (U.S.\$248.8 million)
Employees	3,136 (3,667 consolidated)
Website	https://www.penta-ocean.co.jp/english/

Members of the Board and Audit & Supervisory Board Members

(As of June 25, 2022)

President, Chief Executive Officer and Representative Director
Takuzo Shimizu

Executive Vice President, Representative Director
Kazuya Ueda

Members of the Board

Tetsushi Noguchi Hiroshi Watanabe Tomoyuki Yamashita
Osamu Hidaka Yasuhiro Kawashima* Hidenori Takahashi*
Hokuto Nakano* Mina Sekiguchi*

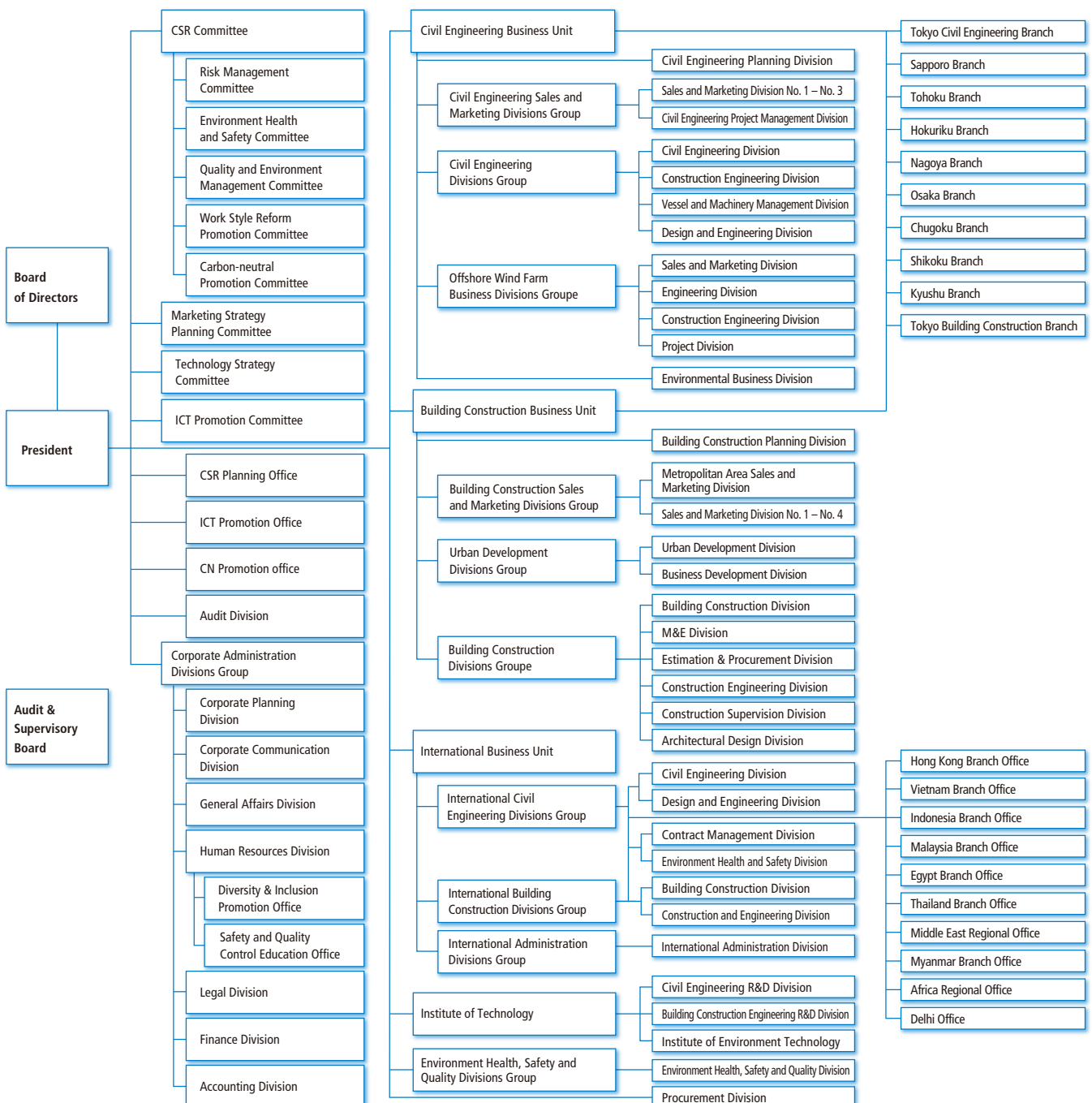
Audit & Supervisory Board Members

Michiko Inatomi Hideaki Kuraishi* Shin Suganami*
Hisashi Takebayashi*

* Indicates external members.

Organization Chart

(As of July 2022)



Penta-Ocean Construction Network

(As of March 31, 2022)



1 Headquarters

2-8, Koraku 2-chome, Bunkyo-ku, Tokyo 112-8576, Japan
Tel: 81-3-3817-7181 Fax: 81-3-3817-7642

2 International Business Unit Headquarters in Singapore

1 HarbourFront Place, #13-01 HarbourFront Tower One,
Singapore 098633
Tel: 65-6338-8966 Fax: 65-6337-0987

3 Hong Kong Branch Office

Unit 601, K Wah Centre, 191 Java Road, North Point,
Hong Kong
Tel: 852-2833-1098 Fax: 852-2572-4080

4 Vietnam Branch Office

4th Floor, 18 Tran Hung Dao Street, Hoan Kiem District, Hanoi, Vietnam
Tel: 84-24-3824-1360 Fax: 84-24-3824-1444

5 Indonesia Branch Office

Mid Plaza II, 24th Floor, JL. Jenderal Sudirman Kav. 10-11,
Jakarta 10220, Indonesia
Tel: 62-21-570-5484 Fax: 62-21-570-5485

6 Malaysia Branch Office

Suite 3B-20-6, Level 20, Block 3B Plaza Sentral,
Jalan Stesen Sentral 5
Kuala Lumpur Sentral 50470 Kuala Lumpur, Malaysia
Tel: 60-3-2260-6736 Fax: 60-3-2260-6737

7 Egypt Branch Office

27 El Falah Street, off Shehab Street, Flat No. 5, 2nd Floor,
Mohandeseen, Giza, Egypt
Tel: 20-2-3345-3207 Fax: 20-2-3345-3206

8 Thailand Branch Office

17th Floor, Room 1704, Vanit II Building, 1126/2
New Petchburi Road, Makkasan Rajthevee,
Bangkok 10400, Thailand
Tel: 66-2-069-2183 Fax: 66-2-069-2185

9 Middle East Regional Office

Office No.15327, Jafza LOB 15, P.O. Box 118791, Dubai, U.A.E.
Tel: 971-4-880-8824 Fax: 971-4-880-8834

10 Myanmar Branch Office

Room 202, La Pyi Wun Plaza, No.37 Alanpya Pagoda Road,
Dagon Township, Yangon 11191, Myanmar
Tel: 95-1-370839 Fax: 95-1-370839

11 Africa Regional Office

Av. Julius Nyerere, no. 140, 5 Andar, Maputo, Mozambique
Tel: 258-84-8666114 Fax: 258-21-483144

12 Delhi Office

Unit No.1120, 11th Floor, JMD Megapolis, Sector-48, Sohana Road,
Gurgaon-122018, Haryana, India
Tel: 91-124-436 8355 Fax: 91-124-436 8356

Consolidated Affiliates

Penta–Ocean Dredging Co., Ltd.	Tokyo, Japan
Yoshin Construction Co., Ltd.	Hiroshima, Japan
Penta Builders Corporation	Tokyo, Japan
Kegoya Dock Co., Ltd.	Hiroshima, Japan
Penta Techno Service Co., Ltd.	Tochigi, Japan
Penta Insurance Services Co., Ltd.	Tokyo, Japan
Jaiwat Co., Ltd.	Miyagi, Japan
Sand Techno Co., Ltd.	Chiba, Japan
Domi Environmental Solutions Co., Ltd.	Tokyo, Japan
Miki Biotech Co., Ltd.	Hyogo, Japan
PKY Marine Co., Ltd.	Tokyo, Japan
Japan Offshore Marine Co., Ltd.	Tokyo, Japan
Penta–Ocean Marine Holdings Pte. Ltd.	Singapore
Andromeda Five Pte. Ltd.	Singapore
Cassiopeia Five Pte. Ltd.	Singapore
Mercury Five Pte. Ltd.	Singapore
Mars Five Pte. Ltd.	Singapore
Cherry Five Pte. Ltd.	Singapore
UG M&E Pte. Ltd.	Singapore
Penta–Ocean (Malaysia) SDN. BHD.	Malaysia
Angkutlaut Ltd.	Malaysia

PT. Penta Ocean Construction	Indonesia
Siam Goyo Co., Ltd.	Thailand
Thai Penta–Ocean Co., Ltd.	Thailand
Penta–Ocean Construction (Hong Kong) Ltd.	Hong Kong
Penta–Ocean Construction (India) Pvt. Ltd.	India
Penta–Ocean Construction (Lao) Solo Company Limited	Lao
PENTA-OCEAN CONSTRUCTION VIETNAM LLC	Vietnam
Brichwood Co., Ltd.	Hong Kong
Penta–Ocean Technology Information Advisory (Shenzhen) Ltd.	China

Equity Affiliates

Haneda International Airport Apron PFI Co., Ltd.	Tokyo, Japan
Koh Brothers Eco Engineering Ltd.	Singapore

Non–Equity Affiliates

Tempozan Terminal Services Co., Ltd.	Osaka, Japan
Miyajima Aqua Partners Co., Ltd.	Hiroshima, Japan
Matsuyama Environment Technology Co., Ltd.	Ehime, Japan
Wakkanai Environment Technology Co., Ltd.	Hokkaido, Japan
Zentsuji, Kotohira, and Tadotsu School meal Supplier Co., Ltd.	Kagawa, Japan
PENTA–OCEAN/HYUNDAI/BOSKALIS JV PTE. LTD.	Singapore

Investor Information

(As of March 31, 2022)

Fiscal Year	April 1 – March 31
Common Stock	Authorized: 599,135,000 Issued: 286,013,910 (excluding 211,117 shares of treasury stock)
Stock Listing	Tokyo and Nagoya Stock Exchanges
Shareholders	42,527
Transfer Agency	Mizuho Trust & Banking Co., Ltd. 2–8–4, Izumi, Suginami–ku, Tokyo 168–8507, Japan

Major Shareholders

Shareholders	Number of shares held (thousands)	Percentage of shares held (%)
The Master Trust Bank of Japan, Ltd. (Trust Account)	48,618	17.0
Custody Bank of Japan, Ltd. (Trust Account)	24,511	8.6
State Street Bank and Trust Company 505001	8,414	2.9
Mizuho Bank, Ltd.	7,059	2.5
Meiji Yasuda Life Insurance Company	6,656	2.3
STATE STREET LONDON CAREOF STATE STREET BANK AND TRUST, BOSTON SSBTC A/C UK LONDON BRANCH CLIENTS- UNITED KINGDOM	5,483	1.9
Tokio Marine & Nichido Fire Insurance Co., Ltd.	4,763	1.7
Sompo Japan Insurance Inc.	4,280	1.5
Penta–Ocean Business Partner Shareholding Association	4,063	1.4
Juniper	3,931	1.4

The percentage of shares held is calculated after exclusion of treasury stock holdings (211,117shares).