

# Company Data

## Company Outline

(As of March 31, 2019)

<b>Company Name</b>	Penta-Ocean Construction Co., Ltd.
<b>Founded</b>	April 1896
<b>Established</b>	April 1950
<b>Headquarters</b>	2-8, Koraku 2-chome, Bunkyo-ku, Tokyo 112-8576, Japan Tel: 81-3-3817-7181 Fax: 81-3-3817-7642
<b>Paid-in Capital</b>	¥30,450 million (U.S.\$274.3 million)
<b>Employees</b>	2,793 (3,319 consolidated)
<b>Website</b>	http://www.penta-ocean.co.jp

## Members of the Board and Audit & Supervisory Board Members

(As of June 25, 2019)

**President, Chief Executive Officer and Representative Director**  
Takuzo Shimizu

**Executive Vice President, Representative Director**  
Kazuya Ueda

### Members of the Board

Tetsushi Noguchi Ryoji Tahara Hiroshi Watanabe  
Junji Katsumura Tomoyuki Yamashita Yasuhiro Kawashima\*  
Hidenori Takahashi\* Naoki Furuya\*

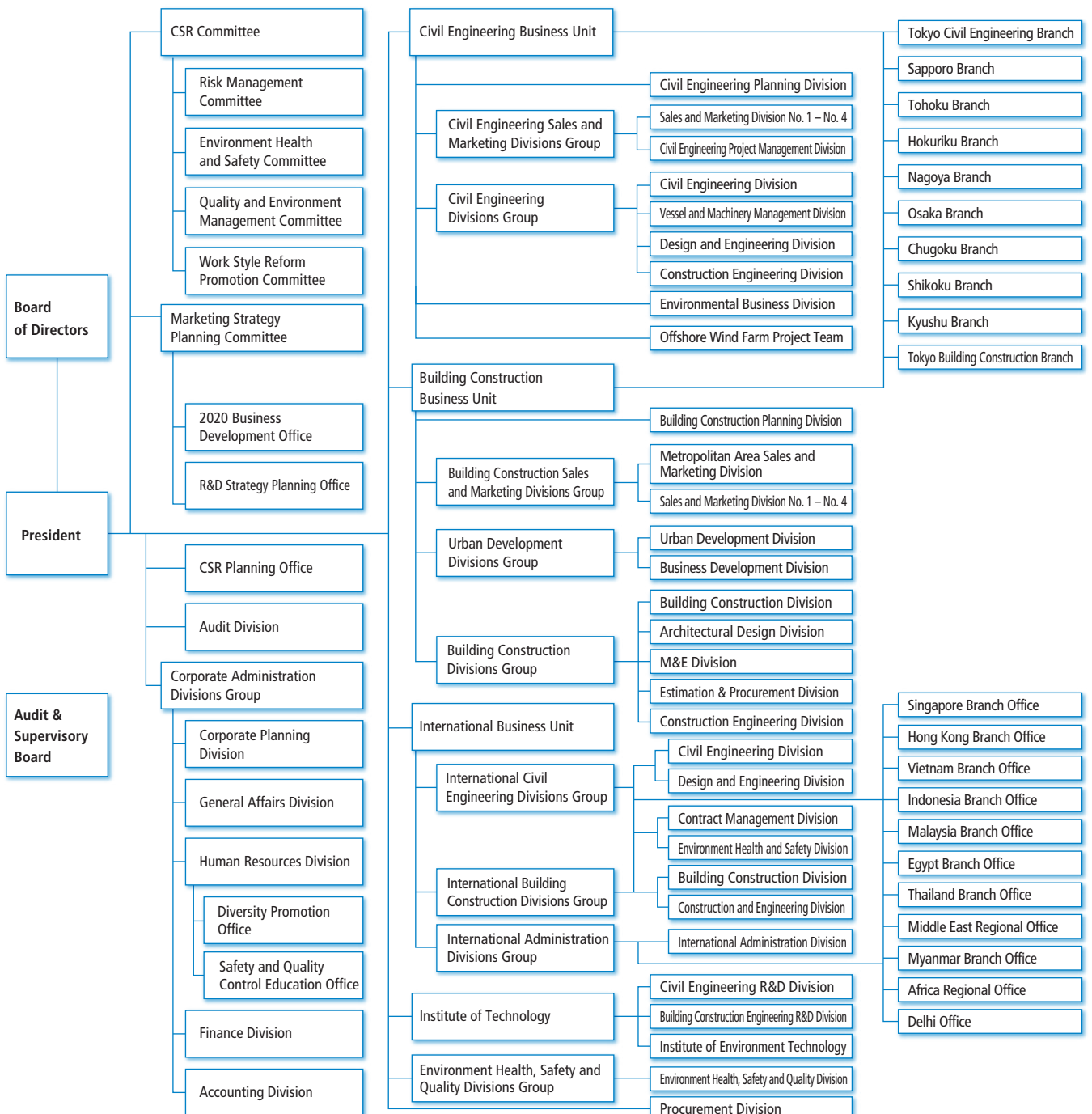
### Audit & Supervisory Board Members

Takeshi Miyazono Hironaga Fukuda\* Yoshiaki Ohashi\*  
Kyota Shigemoto\*

\* Indicates external members.

## Organization Chart

(As of June 1, 2019)



Penta-Ocean Construction Network

(As of July 31, 2019)



**1 Headquarters**

2-8, Koraku 2-chome, Bunkyo-ku, Tokyo 112-8576, Japan  
Tel: 81-3-3817-7181 Fax: 81-3-3817-7642

**2 International Business Unit Headquarters in Singapore  
-International Civil Engineering Divisions Group  
-International Building Construction Divisions Group  
Singapore Branch Office**

1 HarbourFront Place, #13-01 HarbourFront Tower One,  
Singapore 098633  
Tel: 65-6338-8966 Fax: 65-6337-0987

**3 Hong Kong Branch Office**

Unit 601, K Wah Centre, 191 Java Road, North Point,  
Hong Kong  
Tel: 852-2833-1098 Fax: 852-2572-4080

**4 Vietnam Branch Office**

4th Floor, 18 Tran Hung Dao Street, Hanoi, Vietnam  
Tel: 84-24-3824-1360 Fax: 84-24-3824-1444

**5 Indonesia Branch Office**

Mid Plaza II, 24th Floor, JL. Jenderal Sudirman Kav. 10-11,  
Jakarta 10220, Indonesia  
Tel: 62-21-570-5484 Fax: 62-21-570-5485

**6 Malaysia Branch Office**

Suite 3B-20-6, Level 20, Block 3B Plaza Sentral,  
Jalan Stesen Sentral 5  
Kuala Lumpur Sentral 50470 Kuala Lumpur, Malaysia  
Tel: 60-3-2260-6736 Fax: 60-3-2260-6737

**7 Egypt Branch Office**

27 El Falah Street, off Shehab Street, Flat No. 5, 2nd Floor,  
Mohandeseen, Giza, Egypt  
Tel: 20-2-3345-3207 Fax: 20-2-3345-3206

**8 Thailand Branch Office**

17th Floor, Room 1704, Vanit II Building, 1126/2  
New Petchburi Road, Makkasan Rajthevee,  
Bangkok 10400, Thailand  
Tel: 66-2-069-2183 Fax: 66-2-069-2185

**9 Middle East Regional Office**

Office No.15327, Jafza LOB 15, P.O. Box 118791, Dubai, U.A.E.  
Tel: 971-4-880-8824 Fax: 971-4-880-8834

**10 Myanmar Branch Office**

Room 202, La Pyi Wun Plaza, No.37 Alanpya Pagoda Road,  
Dagon Township, Yangon 11191, Myanmar  
Tel: 95-1-370839 Fax: 95-1-370839

**11 Africa Regional Office**

Av. Julius Nyerere, no. 140, 5 Andar, Maputo, Mozambique  
Tel: 258-84-8666114 Fax: 258-21-483144

**12 Delhi Office**

Unit No.1120, 11th Floor, JMD Megapolis, Sector-48, Sohana Road,  
Gurgaon-122018, Haryana, India  
Tel: 91-124-436 8355 Fax: 91-124-436 8356

## Penta–Ocean Construction Group

(As of March 31, 2019)

### Consolidated Affiliates

Penta–Ocean Dredging Co., Ltd.	Tokyo, Japan
Yoshin Construction Co., Ltd.	Hiroshima, Japan
Penta Builders Corporation	Tokyo, Japan
Kegoya Dock Co., Ltd.	Hiroshima, Japan
Penta Techno Service Co., Ltd.	Tochigi, Japan
Sand Techno Co., Ltd.	Chiba, Japan
Domi Environmental Solutions Co., Ltd.	Tokyo, Japan
Penta Insurance Services Co., Ltd.	Tokyo, Japan
Jaiwat Co., Ltd.	Miyagi, Japan
Miki Biotech Co., Ltd.	Hyogo, Japan
Penta–Ocean Marine Holdings Pte. Ltd.	Singapore
Andromeda Five Pte. Ltd.	Singapore
Cassiopeia Five Pte. Ltd.	Singapore
Mercury Five Pte. Ltd.	Singapore
Mars Five Pte. Ltd.	Singapore
Cherry Five Pte. Ltd.	Singapore
Penta–Ocean (Malaysia) SDN. BHD.	Malaysia
Angkutlaut Ltd.	Malaysia

PT. Penta Ocean Construction	Indonesia
Siam Goyo Co., Ltd.	Thailand
Thai Penta–Ocean Co., Ltd.	Thailand
Penta–Ocean Construction (Hong Kong) Ltd.	Hong Kong
Penta–Ocean Construction (India) Pvt. Ltd.	India
Penta–Ocean Construction (Lao) Solo Company Limited	Lao
Brichwood Co., Ltd.	Hong Kong
Penta–Ocean Technology Information Advisory (Shenzhen) Ltd.	China
PENTA–OCEAN/HYUNDAI/BOSKALIS JV PTE. LTD.	Singapore

### Equity Affiliate

Haneda International Airport Apron PFI Co., Ltd.	Tokyo, Japan
--	--------------

### Non–Equity Affiliates

Miyajima Aqua Partners Co., Ltd.	Hiroshima, Japan
Matsuyama Environment Technology Co., Ltd.	Ehime, Japan
Wakkanai Environment Technology Co., Ltd.	Hokkaido, Japan
Zentsuji, Kotohira, and Tadotsu School meal Supplier Co., Ltd.	Kagawa, Japan

## Investor Information

(As of March 31, 2019)

<b>Fiscal Year</b>	April 1 – March 31
<b>Common Stock</b>	Authorized: 599,135,000 Issued: 285,804,190 (excluding 209,720 shares of treasury stock)
<b>Stock Listing</b>	First Section of the Tokyo and Nagoya Stock Exchanges
<b>Shareholders</b>	36,483
<b>Transfer Agency</b>	Mizuho Trust & Banking Co., Ltd. 2–8–4, Izumi, Suginami–ku, Tokyo 168–8507, Japan

### Major Shareholders

Shareholders	Number of shares held (thousands)	Percentage of shares held (%)
Japan Trustee Services Bank, Ltd. (Trust Account)	39,824	13.9
The Master Trust Bank of Japan, Ltd. (Trust Account)	21,628	7.6
Mizuho Bank, Ltd.	7,059	2.5
Meiji Yasuda Life Insurance Company	6,656	2.3
Trust & Custody Services Bank, Ltd. (Security Investment Trust Account)	6,471	2.3
Japan Trustee Services Bank, Ltd. (Trust Account 5)	5,224	1.8
JUNIPER	5,216	1.8
JPMorgan Chase Bank, N.A. 385151	4,398	1.5
Sompo Japan Nipponkoa Insurance Inc.	4,280	1.5
Tokio Marine & Nichido Fire Insurance Co., Ltd.	3,934	1.4