

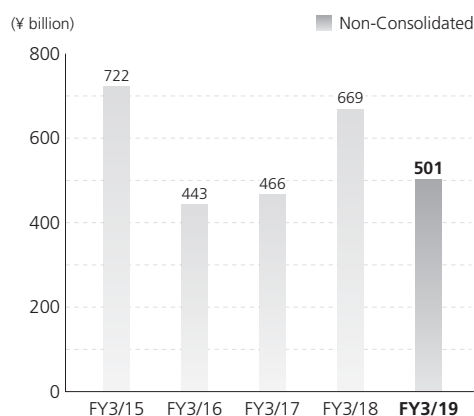
Consolidated Financial Highlights

Penta-Ocean Construction Co., Ltd. and Consolidated Subsidiaries
For the years ended March 31

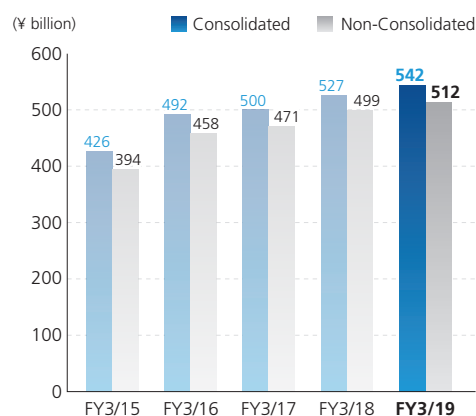
	Millions of yen		Thousands of U.S. dollars
	2018	2019	2019
Net sales	¥526,902	¥541,949	\$4,882,866
Total assets	418,824	383,840	3,458,328
Net assets excluding non-controlling interests	111,971	126,517	1,139,896
Ordinary income	25,683	26,569	239,383
Income before income taxes	25,290	26,560	239,303
Net income attributable to owners of parent	17,826	18,899	170,279
Cash dividends	4,003	5,430	48,926
Per share of common stock:			
	Yen		U.S. dollars
Net assets excluding non-controlling interests	¥392.27	¥443.36	\$3.99
Net income attributable to owners of parent	62.41	66.22	0.60
Cash dividends	14.00	19.00	0.17

Note: Figures in U.S. dollars are converted for convenience only, at the rate of ¥110.99 per U.S.\$1, prevailing on March 31, 2019.

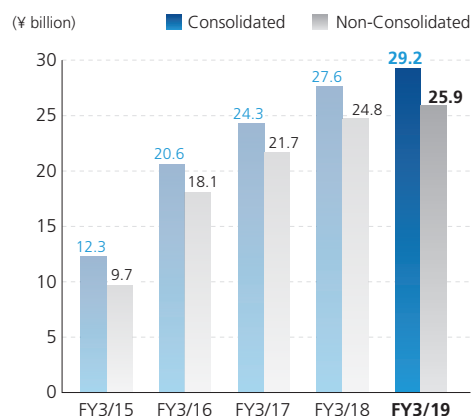
Orders Received



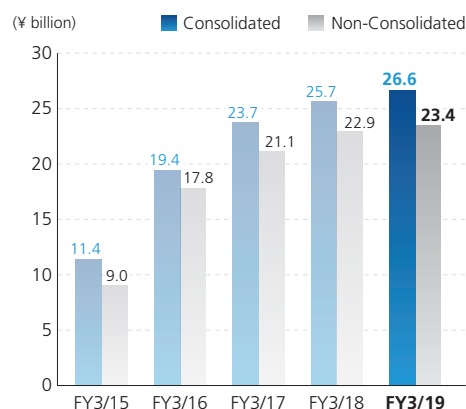
Net Sales



Operating Income



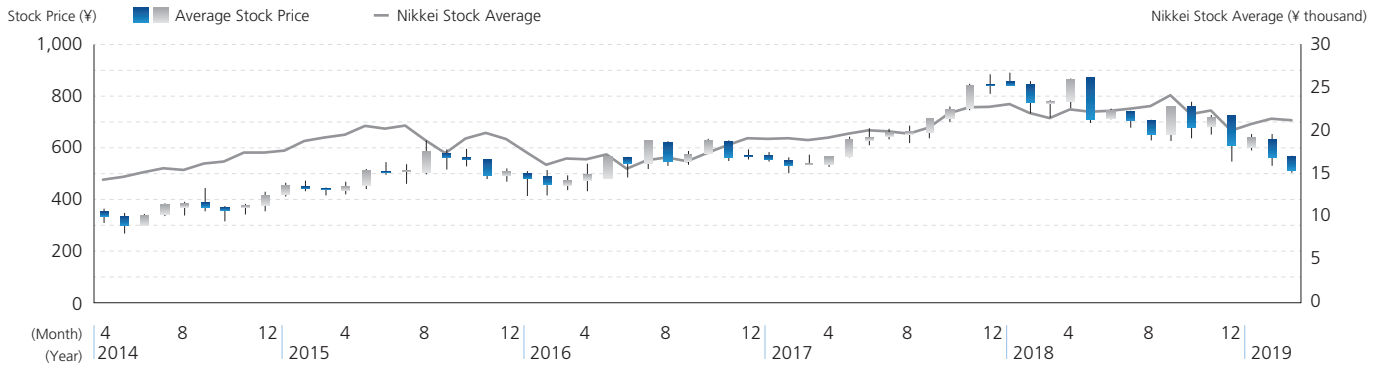
Ordinary Income



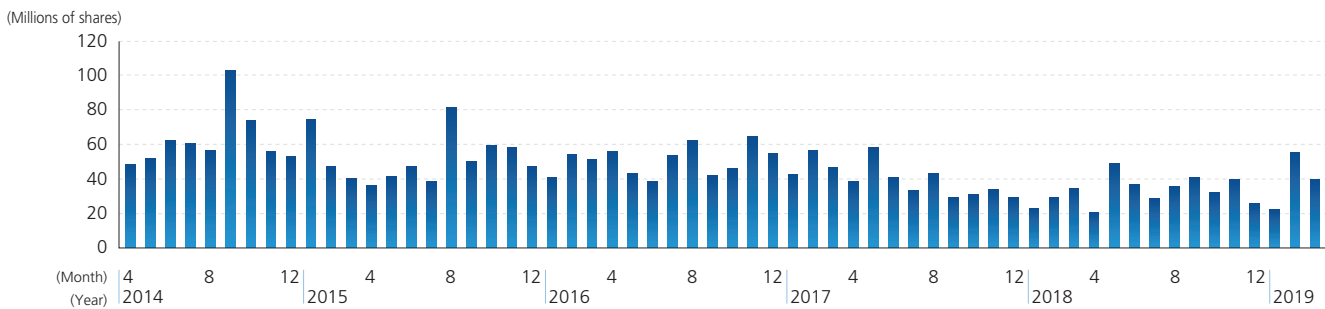
Disclaimer

The information contained in this annual report concerning Penta-Ocean Construction Co., Ltd.'s forward-looking statements and management plans are based on information available to the company at the time that it was created. Please note that actual results may differ from the forecasts indicated here due to a variety of future factors.

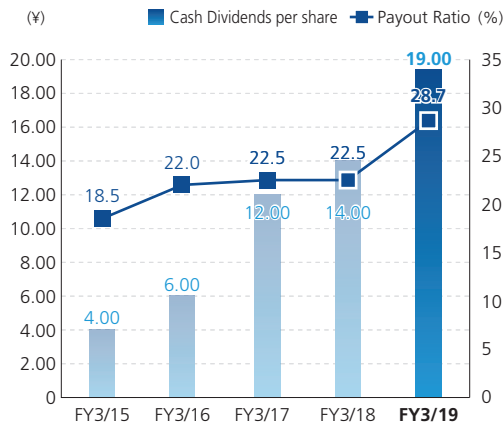
Stock Price Range



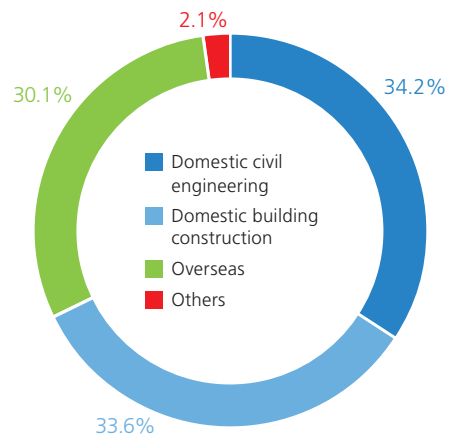
Trading Volume



Cash Dividends per Share and Payout Ratio



Sales by Segments

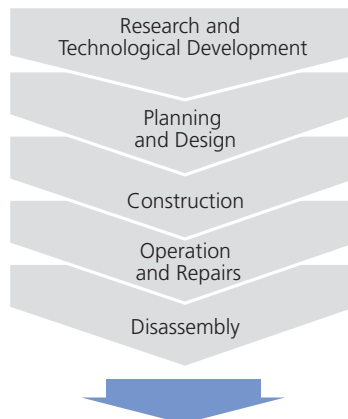


Business Activities and Environmental Burden

INPUT

Power (kWh)*	18,710,484
Light oil (kL)	36,536
Heavy oil (kL)	23,544
Kerosene (kL)*	336
Concrete (t)	1,328,000
Asphalt concrete (t)	126,000
Rubble (m ³)	1,016,000
Earth and sand (m ³)	3,734,000

* Site + office combined number



OUTPUT

Amount of CO ₂ emissions (t-CO ₂)	126,511
Amount of construction waste (t)	485,000
Final disposal rate (%)	2.0
Recycling rate (%)	98.0
Amount of soil generated from construction (m ³)	1,890,000

