

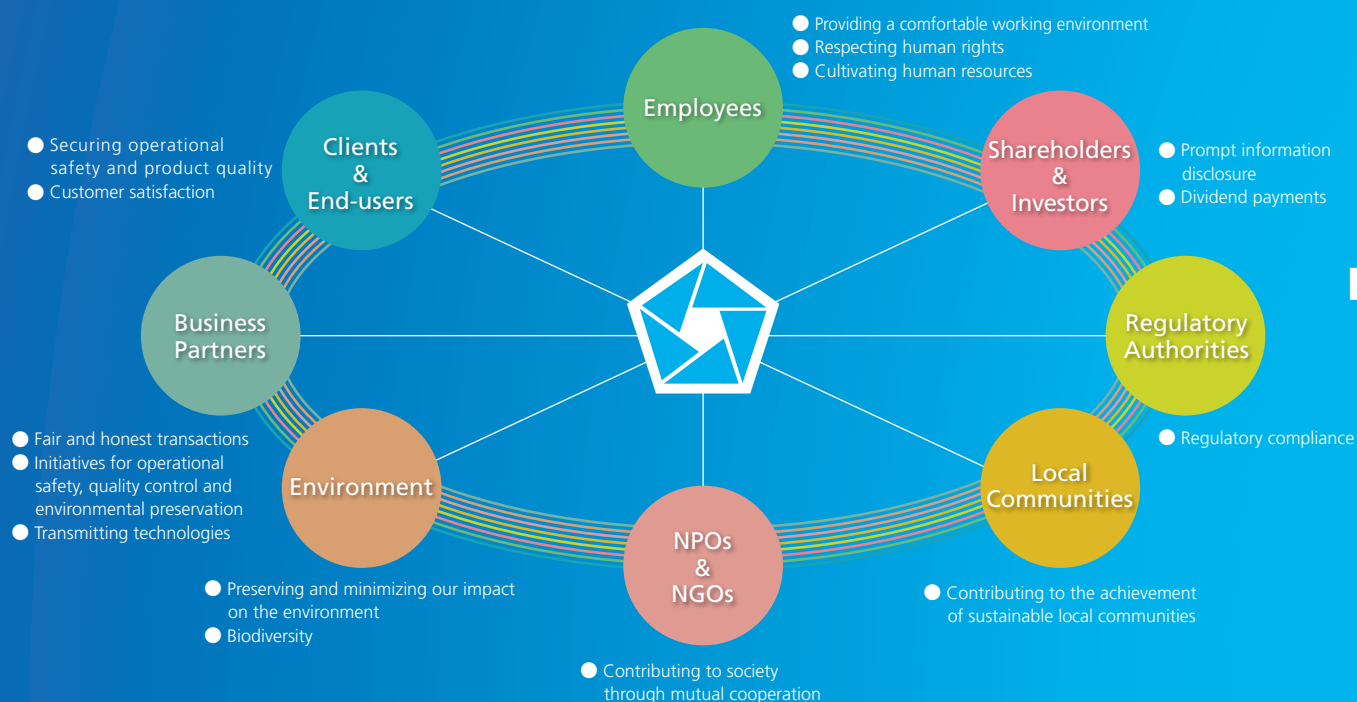
# GOING FURTHER

その先の向こうへ



Since its foundation in 1896 in Kure city, Hiroshima prefecture, Penta-Ocean Construction Co., Ltd. has grown with society by providing an enterprising, up-and-coming spirit and leading-edge construction technologies. After its founding the company has been continuing with a mentality of continually seeking challenges in new field as part of its corporate DNA. A spirit of accepting challenges that never varies, even as times change, and the power of flexible self-innovation to respond to the needs of each new era. At Penta-Ocean, we are never satisfied with things as they are, and we continue to move steadily forward, step by step.

## Penta-Ocean Construction Group and Our Stakeholder Engagement Model



### Contents

Corporate Policy / Corporate Vision / CSR Policy	1	Creation of a Rich Environment	18
Corporate History	2	Working in Harmony with Society	22
Consolidated Financial Highlights	4	Major Projects in FY3/19	26
Message from the President	6	Consolidated Financial Statements	29
Medium-Term Management Plan	8	Non-Consolidated Financial Statements	60
Features	10	Company Data	65
Promotion of Effective Corporate Governance	16		

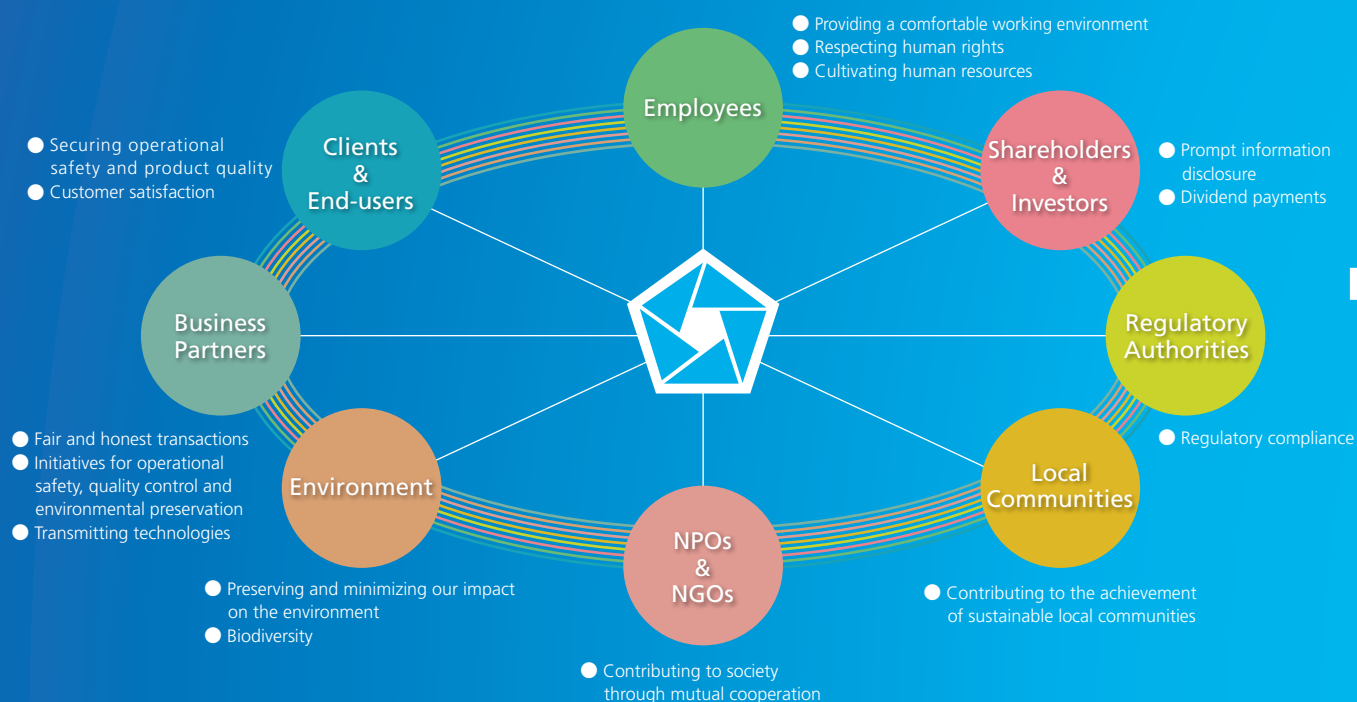
# GOING FURTHER

その先の向こうへ



Since its foundation in 1896 in Kure city, Hiroshima prefecture, Penta-Ocean Construction Co., Ltd. has grown with society by providing an enterprising, up-and-coming spirit and leading-edge construction technologies. After its founding the company has been continuing with a mentality of continually seeking challenges in new field as part of its corporate DNA. A spirit of accepting challenges that never varies, even as times change, and the power of flexible self-innovation to respond to the needs of each new era. At Penta-Ocean, we are never satisfied with things as they are, and we continue to move steadily forward, step by step.

## Penta-Ocean Construction Group and Our Stakeholder Engagement Model



### Contents

Corporate Policy / Corporate Vision / CSR Policy	1
Corporate History	2
Consolidated Financial Highlights	4
Message from the President	6
Medium-Term Management Plan	8
Features	10
Promotion of Effective Corporate Governance	16

Creation of a Rich Environment	18
Working in Harmony with Society	22
Major Projects in FY3/19	26
Consolidated Financial Statements	29
Non-Consolidated Financial Statements	60
Company Data	65

## Corporate Policy

### Affiliating with Society

The Company keeps abreast of continued growth by providing high quality construction services and building trustful relationships with all stakeholders.

### Creating a Nature-Rich Environment

The Company strongly believes that the cornerstone of our social and economic activities is delivering a nature-rich environment to the future generations. We create safe and comfortable living and social environments through our earth conscientious operations.

### Cherishing a Pioneering Spirit

The Company demonstrates an enterprising spirit in dealing with the changes in society that influence our business in order to conscientiously respond to the needs of our customers and communities.

## Corporate Vision

### “Creative” company for land and sea

As a leading contractor in coastal and waterfront areas, we seek to create attractive environments and pursue customer satisfaction and social contribution as an engineering-oriented company.

### “Committed” company guaranteeing solid quality

We build trustful relationships with our customers and society through providing high quality workmanship and safe products backed by solid technologies.

### “Future-oriented” company creating rich environments for the future generations

We establish quality and nurture rich environments throughout the course of our corporate activities and pass on our dreams, hopes and possibilities to the next generations.

## Penta-Ocean Construction Group's Corporate Value Chain



Contribution to the  
sustained growth  
of society

## CSR Policy

Penta-Ocean Construction Group views that its greatest contribution to society is the construction of superior infrastructure. We aim to be a respectable and highly attractive group of companies not only to our shareholders, customers, business partners and employees, but also to local communities by providing high-quality workmanship backed by advanced technologies developed with high regard for safety and ecological considerations.

Dignified Business  
Conduct



Coexistence with  
the Environment  
and Nature



Human Propriety



Information  
Transparency

