

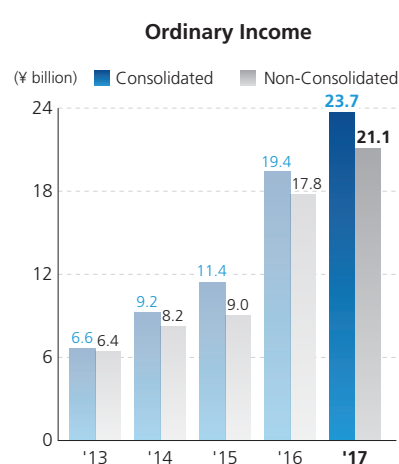
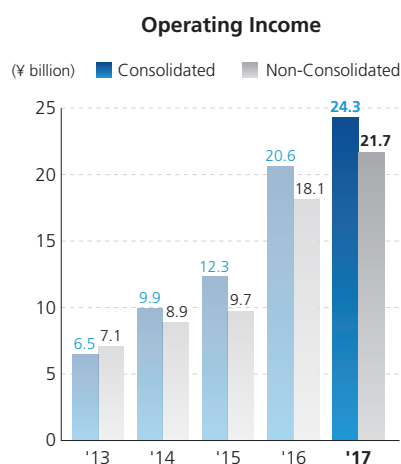
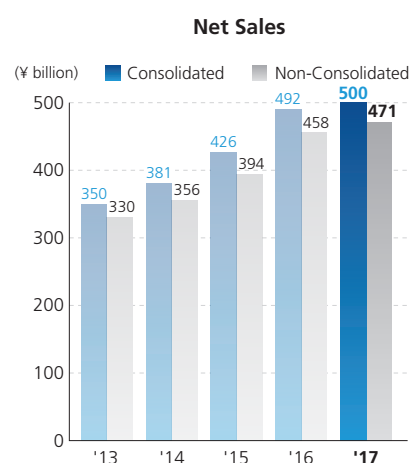
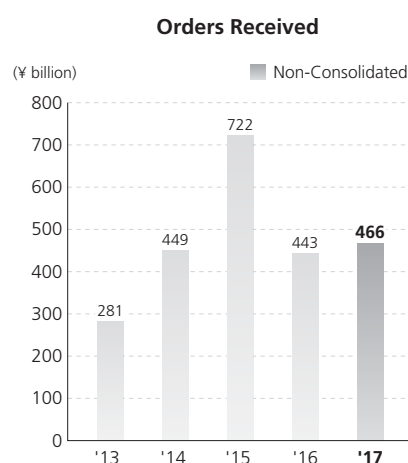
Consolidated Financial Highlights

Penta-Ocean Construction Co., Ltd. and Consolidated Subsidiaries
For the years ended March 31

	Millions of yen		Thousands of U.S. dollars
	2016	2017	2017
Net Sales	¥491,564	¥500,336	\$4,459,722
Total Assets	378,766	372,311	3,318,576
Net Assets Excluding Non-Controlling Interests	80,588	96,377	859,052
Ordinary Income	19,409	23,709	211,330
Income before Income Taxes and Non-Controlling Interests	14,242	23,028	205,258
Net Income	7,806	15,272	136,124
Cash Dividends	1,715	3,431	30,581

Per share of common stock:	Yen		U.S. dollars
	2016	2017	2017
Net Assets Excluding Non-Controlling Interests	¥281.87	¥337.10	\$3.00
Net Income	27.30	53.42	0.48
Cash Dividends	6.00	12.00	0.11

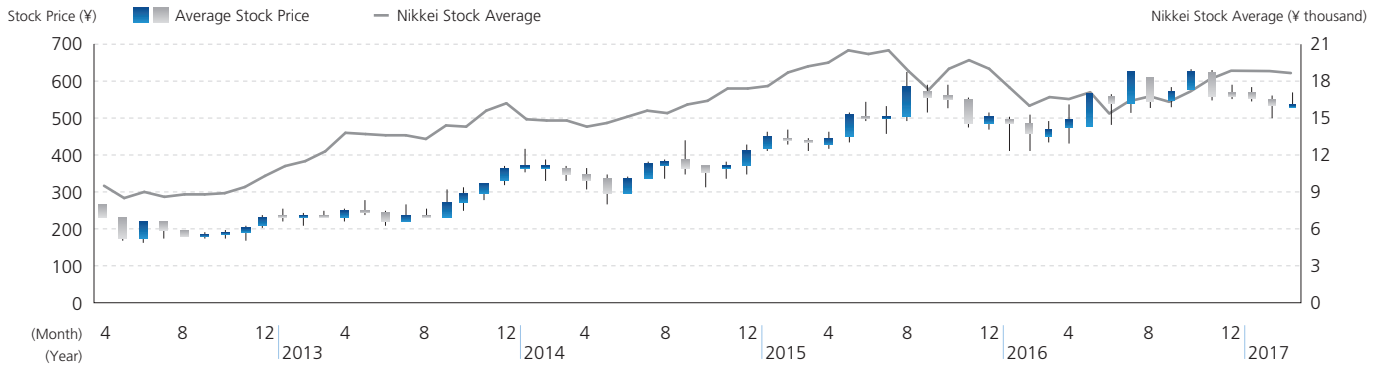
Note: Figures in U.S. dollars are converted for convenience only, at the rate of ¥112.19 per U.S.\$1, prevailing on March 31, 2017.



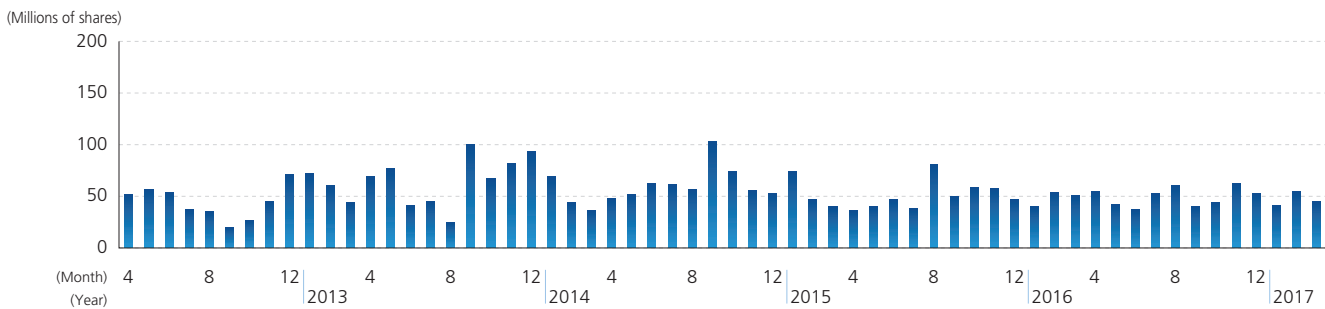
Disclaimer

The information contained in this annual report concerning Penta-Ocean Construction Co., Ltd.'s forward-looking statements and management plans are based on information available to the company at the time that it was created. Please note that actual results may differ from the forecasts indicated here due to a variety of future factors.

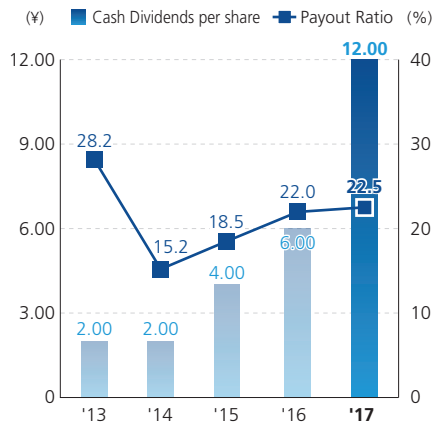
Stock Price Range



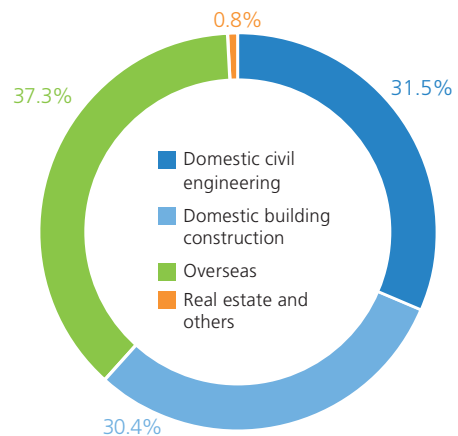
Trading Volume



Cash Dividends per Share and Payout Ratio



Sales by Segments

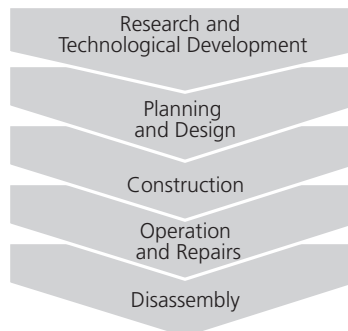


Business Activities and Environmental Burden

INPUT

Power (kWh)*	20,399,000
Light oil (kl)	21,388,000
Heavy oil (kl)	30,551,000
Kerosene (kl)*	153,000
Concrete (t)	13,068,000
Asphalt concrete (t)	643,000
Rubble (m ³)	8,232,000
Earth and sand (m ³)	28,509,000

* Site + office combined number



OUTPUT

Amount of CO ₂ emissions (t-CO ₂)	134,000
Amount of construction waste (t)	420,000
Final disposal rate (%)	4.3
Recycling rate (%)	95.7
Amount of soil generated from construction (m ³)	1,537,000

Environmental conservation/
restoration and communication

Creation of abundant environments

Handing over to the
next generation