

Company Data

Company Outline

(As of March 31, 2014)

Company Name	Penta-Ocean Construction Co., Ltd.
Established	April 1896
Head Office	2-8, Koraku 2-chome, Bunkyo-ku, Tokyo 112-8576, Japan Tel: 81-3-3817-7181 Fax: 81-3-3817-7642
Paid-in Capital	¥30,450 million (U.S.\$295.9 million)
Employees	2,390 (2,905 consolidated)
Website	http://www.penta-ocean.co.jp

Directors and Corporate Auditors

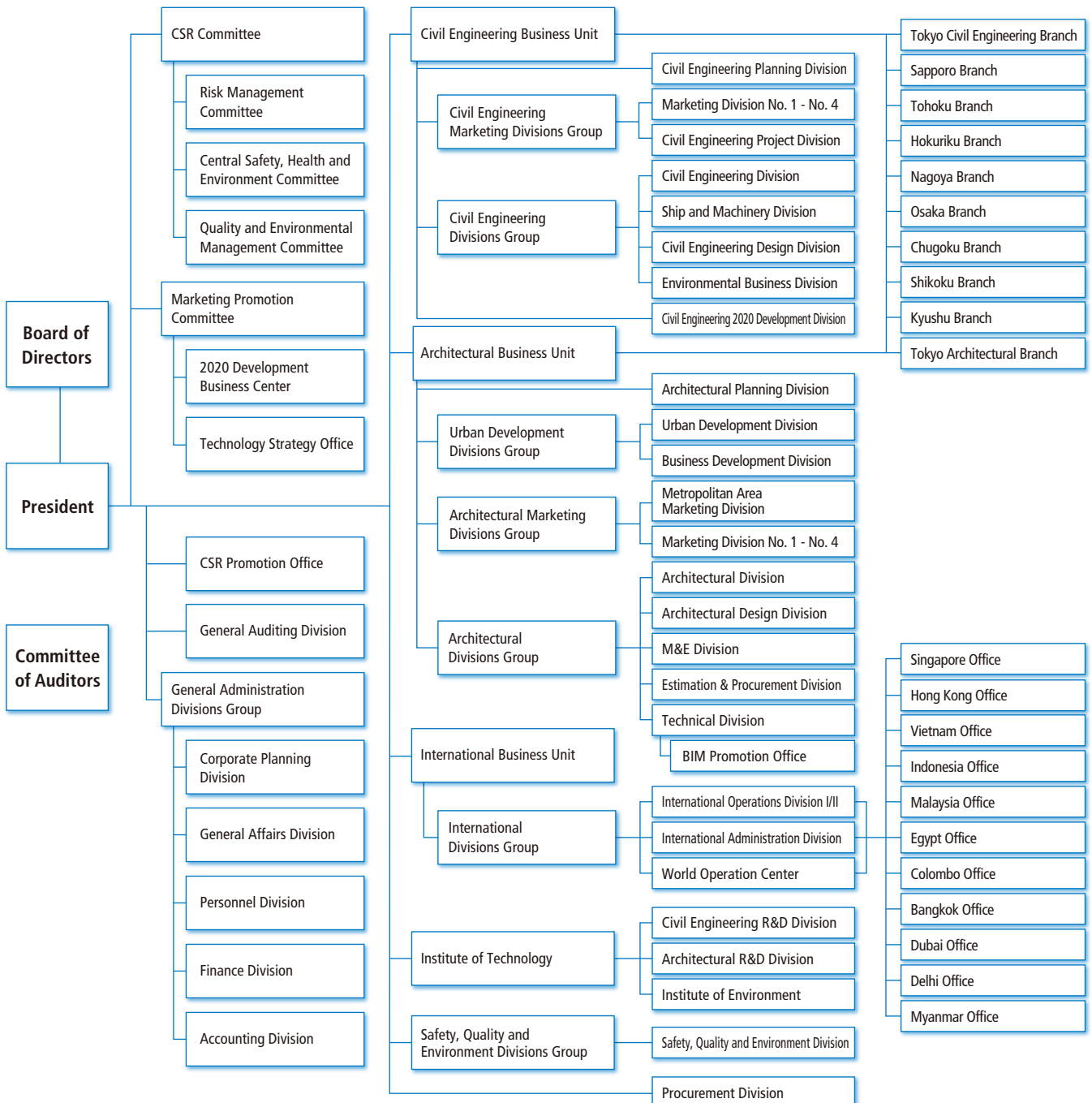
(As of June 27, 2014)

Chairman and Representative Director	Yoshio Murashige			
President, Chief Executive Officer and Representative Director	Takuzo Shimizu			
Representative Director	Kunihiko Sasaki			
Directors	Yasuji Kakimoto	Kazuya Ueda	Yuji Nakamitsu	Tetsushi Noguchi
	Shinichi Igarashi	Michio Inatomi	Hisanori Ohara*	
Corporate Auditors	Takeshi Miyazono Tatsushi Higuchi*			
	Hironaga Fukuda* Tatsuya Toyoshima*			

* Indicates an external director or external corporate auditor.

Organization Chart

(As of April 1, 2014)





1 HEAD OFFICE

2-8, Koraku 2-chome, Bunkyo-ku, Tokyo 112-8576, Japan
Tel: 81-3-3817-7181 Fax: 81-3-3817-7642

2 SINGAPORE OFFICE

1 Kim Seng Promenade, #11-03, Great World City,
East Tower, 237994 Singapore
Tel: 65-6338-8966 Fax: 65-6337-0987

3 HONG KONG OFFICE

Unit 601, K Wah Center, 191 Java Road, North Point,
Hong Kong
Tel: 852-2833-1098 Fax: 852-2572-4080

4 VIETNAM OFFICE

4th Floor, 18 Tran Hung Dao Street, Hanoi, Vietnam
Tel: 84-4-3824-1360 Fax: 84-4-3824-1444

5 INDONESIA OFFICE

Mid Plaza II, 24th Floor, JL. Jenderal Sudirman Kav. 10-11,
Jakarta 10220, Indonesia
Tel: 62-21-570-5484 Fax: 62-21-570-5485

6 MALAYSIA OFFICE

Suite 3B-20-6, Level 20, Block 3B Plaza Sentral,
Jalan Stesen Sentral 5
Kuala Lumpur Sentral 50470 Kuala Lumpur, Malaysia
Tel: 60-3-2260-6736 Fax: 60-3-2260-6737

7 EGYPT OFFICE

27 El Falah Street, off Shehab Street, Flat No. 5, 2nd Floor,
Mohandeseen, Giza, Egypt
Tel: 20-2-3345-3207 Fax: 20-2-3345-3206

8 COLOMBO OFFICE

P.O. Box 383, No. 3-2, CBM House No. 2A, Lake Drive,
Colombo 8, Sri Lanka
Tel: 94-11-2690316 Fax: 94-11-2671944

9 BANGKOK OFFICE

11th Floor, Room 1106, Vanit II Building, 1126/2
New Petchburi Road, Makkasan Rajthevee,
Bangkok 10400, Thailand
Tel: 66-2-655-2183 Fax: 66-2-655-2185

10 DUBAI OFFICE

Office No.15424, Jafza LOB 15. P.O. Box 118791, Dubai, U.A.E.
Tel: 971-4-880-8824 Fax: 971-4-880-8834

11 DELHI OFFICE

No. 402, 4th Floor, Time Tower, Mehrauli Gurgaon Road,
Gurgaon-122002, Haryana, India
Tel: 91-124-436-8355 Fax: 91-124-436-8356

12 MYANMAR OFFICE

Room 202, La Pyayt Wun Plaza, No.37 Alanpya Pagoda Road,
Dagon Township, Yangon 11191 Myanmar
Tel: 95-1-370839 Fax: 95-1-370839

Consolidated Subsidiaries

Penta-Ocean Dredging Co., Ltd.	Tokyo, Japan
Yoshin Construction Co., Ltd.	Hiroshima, Japan
Penta Builders Corporation	Tokyo, Japan
Kegoya Dock Co., Ltd.	Hiroshima, Japan
Penta Techno Service Co., Ltd.	Tochigi, Japan
Sand Techno Co., Ltd.	Chiba, Japan
Domi Environmental Solutions Co., Ltd.	Tokyo, Japan
Penta Insurance Services Co., Ltd.	Tokyo, Japan
Jaiwat Co., Ltd.	Miyagi, Japan
Miki Biotech Co., Ltd.	Hyogo, Japan
Penta-Ocean (Malaysia) SDN. BHD.	Malaysia
Angkutlaut Ltd.	Malaysia
Siam Goyo Co., Ltd.	Thailand
Thai Penta-Ocean Co., Ltd.	Thailand
Penta-Ocean Construction (India) Ltd.	India
Penta-Ocean Construction (Hong Kong) Ltd.	Hong Kong
Brichwood Co., Ltd.	Hong Kong

Penta-Ocean Marine Holdings Pte. Ltd.	Singapore
Andromeda Five Pte. Ltd.	Singapore
Cassiopeia Five Pte. Ltd.	Singapore
Mercury Five Pte. Ltd.	Singapore
Mars Five Pte. Ltd.	Singapore
Jupiter Five Pte. Ltd.	Singapore
Neptune Five Pte. Ltd.	Singapore
Cherry Five Pte. Ltd.	Singapore
KD Shipping Inc.	Panama
Penta-Ocean Technology Information Advisory (Shenzhen) Ltd.	China

Equity Affiliates

Haneda International Airport Apron PFI Co., Ltd.	Tokyo, Japan
Miyajima Aqua Partners Co., Ltd.	Hiroshima, Japan

Non-Equity Affiliate

Matsuyama Environment Technology Co., Ltd.	Ehime, Japan
--	--------------

Investor Information

(As of March 31, 2014)

Fiscal Year	April 1 - March 31
Common Stock	Authorized: 599,135,000 Issued: 286,013,910
Stock Listing	First Section of the Tokyo and Nagoya Stock Exchanges
Shareholders	36,784
Transfer Agency	Mizuho Trust & Banking Co., Ltd. 2-8-4, Izumi, Suginami-ku, Tokyo 168-8507, Japan

Major Shareholders

Shareholders	Shares held (thousands)	Voting right ratio (%)
The Master Trust Bank of Japan, Ltd. (Trust Account)	31,235	10.9
Japan Trustee Services Bank, Ltd. (Trust Account)	30,405	10.6
Mizuho Bank, Ltd.	7,059	2.5
Juniper	7,039	2.5
Meiji Yasuda Life Insurance Co.	6,656	2.3
RBC ISB A/C DUB NON RESIDENT-TREATY RATE	5,900	2.1
Sompo Japan Insurance Inc.	4,280	1.5
Tokio Marine & Nichido Fire Insurance Co., Ltd.	3,934	1.4
Northern Trust Co. (Avfc) Sub A/C British Clients	3,545	1.2
Mizuho Trust & Banking Co., Ltd.	3,470	1.2