

On April 1, 2005, both the Corporate Social Responsibility (CSR) Promotion Committee and the CSR Promotion Office were established as organizations directly linked to the Office of the President of Penta-Ocean. The Committee is chaired by the Company's president and encompasses four sub-committees, of which all directors are members. The move was carried out to improve communication and decision making among top level management of the Penta-Ocean Group and is expected to also improve the Group's image with the general public.

### Basic Policy of the CSR

The building of infrastructure is perhaps the most meaningful contribution a construction company can make to society and based on this premise, the Group continues to strive to improve its position for its shareholders, trading partners, customers, and employees. One way in which it achieves this is by focusing on environmental concerns and by developing innovative technologies that meet the challenges of a rapidly evolving global community.

#### 1. Honorable Corporate Activities

Business activities must be in accordance with the law, socially acceptable, and morally just.

#### 2. Coexistence with the Environment and Nature

- Construct environmental friendly structures and develop environmentally sound technologies that preserve earth's ecology.
- Develop comprehensive disaster prevention technology to produce structures that can withstand earthquakes and other naturally destructive forces.
- Implement rapid response support activities for times of emergency.

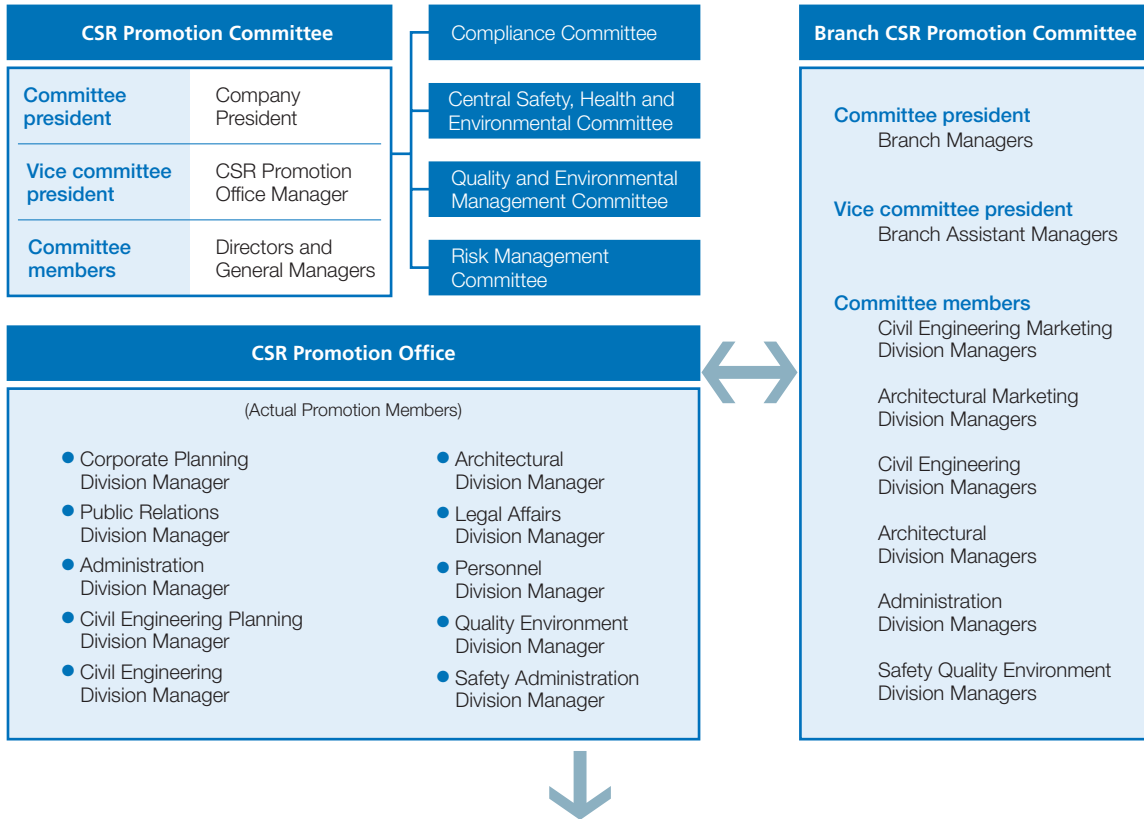
#### 3. Respect for Humanity

- Respect the individuality of each employee and create a working environment where each person can demonstrate their abilities and be rewarded for their efforts.
- Respect for human rights and the diversity of all people connected with the Company.

#### 4. Communication with Society

Strive for optimum communication with stakeholders (shareholders, customers, business partners, employees and the local community), and the timely and appropriate disclosure of information that demonstrates maximum accountability.

## CSR Promotion System



## Constant and Meaningful Communication with Stakeholders

Stakeholders of Penta-Ocean Construction Co., Ltd. and its subsidiaries include –

■ **Customers and Consumers**

Assurance of safety and quality and customer satisfaction

■ **Shareholders and Investors**

Appropriate disclosure of information and data

■ **Trading Partners**

Fair and impartial transactions

■ **Employees**

Realization of optimum work environments and respect for human rights

■ **Local Society**

Increasing its contribution

■ **Ecology**

Preservation of the environment

■ **NPO and NGO**

Social contribution through collaboration

■ **Relevant Authorities**

Compliance with laws, rules and regulations