

## Company Data

(As of June 29, 2005)

### Company Outline

---

<b>Company Name</b>	Penta-Ocean Construction Co., Ltd.
<b>Established</b>	April 1896
<b>Head Office</b>	2-8, Koraku 2-chome, Bunkyo-ku, Tokyo 112-8576, Japan Telephone: 81-3-3817-7181 Facsimile: 81-3-3817-7642
<b>Paid-in Capital</b>	20,570million of Yen (US\$ 191.5 million)
<b>No. of Employees</b>	2,965
<b>Website</b>	<a href="http://www.penta-ocean.co.jp">www.penta-ocean.co.jp</a>

### Board of Directors and Auditors

---

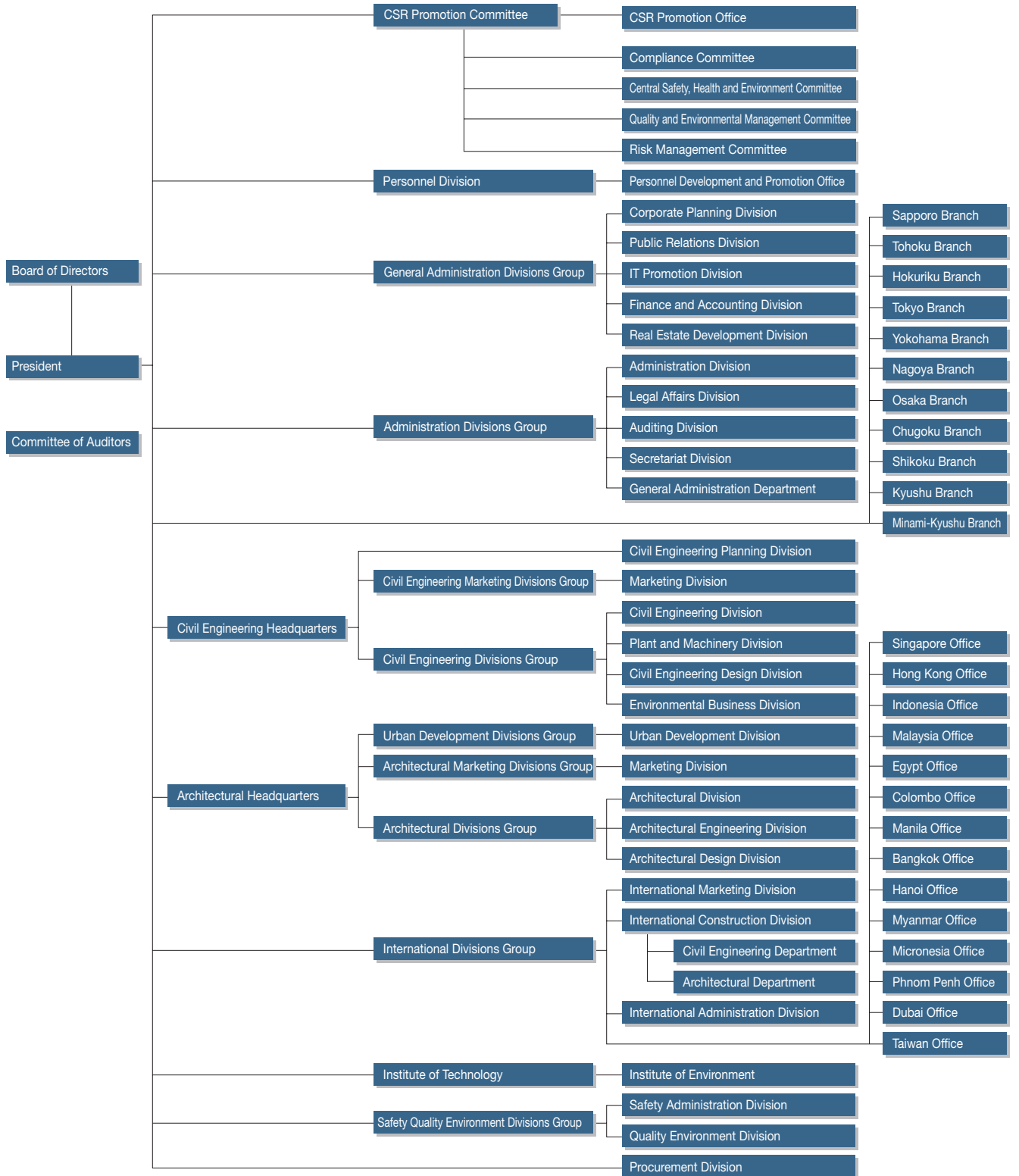
**President** Kazujiro Tetsumura\*

**Directors** Yoshio Murashige\*  
Kazuyuki Kawakami\*  
Hayuru Tsuda  
Toshinori Tajimi  
Junichi Kamise  
Kosuke Kondo  
Yoshihisa Takimoto  
Masafumi Saito  
Yoshihisa Tomoda

**Corporate Auditors** Hirosuke Kawamoto  
Kaoru Kurokawa  
Keiji Yokooji  
Yoshiteru Iwasaki

\* Representative Director  
(As of June 29, 2005)

# Organization Chart



## Penta-Ocean Network



### 1 Head Office

2-8 Koraku 2-chome, Bunkyo-ku  
Tokyo 112-8576, Japan  
Tel: 81-3-3817-7181  
Fax: 81-3-3817-7642

### 2 Singapore Office

1 Kim Seng Promenade, #13-01/02  
Great World City, East Tower  
Singapore 237994  
Tel: 65-6338-8966  
Fax: 65-6337-0987

### 3 Hong Kong Office

30th Floor, 248 Queen's Road East  
Wanchai, Hong Kong  
Tel: 852-2833-1098  
Fax: 852-2572-4080

### 4 Indonesia Office

Midplaza II, 15th Floor  
JL. Jenderal Sudirman Kav.  
10-11 Jakarta 10220, Indonesia  
Tel: 62-21-570-5484  
Fax: 62-21-570-5485

### 5 Malaysia Office

508, 5th Floor, Block A, Kelana Business Centre  
97, Jalan SS 7/2, Kelana Jaya 47301  
Petaling Jaya, Selangor Darul Ehsan, Malaysia  
Tel: 60-3-7492-2208  
Fax: 60-3-7492-2209

### 6 Egypt Office

27 El Falah Street off Shehab Street  
Flat No. 5, 2nd Floor, Mohandeseen  
Giza, Egypt  
Tel: 20-2-345-3207  
Fax: 20-2-345-3206

### 7 Colombo Office

P.O. Box 383, Kochchi-Kade, Gate No. 6  
Colombo Port, Colombo 13, Sri Lanka  
Tel: 94-112-449-978  
Fax: 94-112-449-979

### 8 Manila Office

Unit A1, 2nd Floor, Almeda Arcade  
1014 Pasay Road, Makati City, Philippines  
Tel: 63-2-752-8997  
Fax: 63-2-752-8996

### 9 Bangkok Office

11th Floor, Room 1106, Vanit II Building 1126/2  
New Petchburi Road, Makkasan Rajthevee  
Bangkok 10400, Thailand  
Tel: 66-2-655-2183  
Fax: 66-2-655-2185

### 10 Hanoi Office

2nd Floor, 18 Tran Hung Dao Street  
Hoan Kiem, Hanoi, Vietnam  
Tel: 84-4-824-1360  
Fax: 84-4-824-1444

### 11 Myanmar Office

No.156, 4th Floor, 47th Street  
Botahtaung Township  
Yangon, Myanmar  
Tel: 95-1-203-076  
Fax: 95-1-203-076

### 12 Micronesia Office

P.O. Box 2201, Kolonia, Phonpei  
Federated States of Micronesia 96941  
Tel: 691-320-2855  
Fax: 691-320-2855

### 13 Phnom Penh Office

P.O.Box 2422, Phnom Penh III  
No. F20, France Street  
Norodom Road, Borei Chamkamorn  
Khan Chamkamorn  
Phnom Penh, Cambodia  
Tel 855-23-3-60463  
Fax: 855-23-3-60462

### 14 Dubai Office

LOB 16-612, Jebel Ali Free Zone  
P.O. Box 61498, Dubai  
United Arab Emirates  
Tel: 971-4-8872992  
Fax: 971-4-8872982

### 15 Taiwan Office

Room 301, 12th Floor, No.51  
Hengyang Road, Zhongzheng District  
Taipei City 100, Taiwan (R.O.C.)  
Tel: 886-2-8630-5276  
Fax: 886-2-8630-1102

## Penta-Ocean Group

### Consolidated Subsidiaries

---

Penta-Ocean Dredging Co., Ltd.	Tokyo, Japan
Yoshin Construction Co., Ltd.	Hiroshima, Japan
Penta Builders Corporation	Tokyo, Japan
Penta Builders Nishi-Nihon Corporation	Hiroshima, Japan
Kyushu Yoshin Construction Co., Ltd.	Fukuoka, Japan
Obama Marine Co., Ltd.	Nagasaki, Japan
Penta Techno Service Co., Ltd.	Tochigi, Japan
Kegoya Dock Co., Ltd.	Hiroshima, Japan
Sand Techno Co., Ltd.	Chiba, Japan
Nagasaki Sogo Kanri Co., Ltd.	Nagasaki, Japan
Domi Environmental Solutions	Tokyo, Japan
Penta-Ocean Construction (Malaysia) Sdn. Bhd.	Malaysia
Siam Goyo Co., Ltd.	Thailand
Modern Mind Co., Ltd.	Hong Kong
Nicosia Co., Ltd.	Hong Kong
Brichwood Co., Ltd.	Hong Kong
Penta-Ocean Dredging Panama Inc.	Panama
Penta-Ocean Construction (Hong Kong) Ltd.	Hong Kong
Belleza Del Mar Transport Inc.	Panama
Viento Del Mar Transport Inc.	Panama
Reina Del Mar Transport Inc.	Panama
Sol Del Mar Transport Inc.	Panama
Cosmo Transport Panama Inc.	Panama
Gloria Transport Inc.	Panama
Angkutlaut Ltd.	Malaysia
Penta-Ocean Technology Information Advisory (Shenzhen) Ltd.	China

### Consolidated Affiliates

---

Green Port Co., Ltd.	Miyagi, Japan
Keisoku Joho System Co., Ltd.	Tokyo, Japan
Omori Building Co., Ltd.	Tokyo, Japan
Jiwat Co., Ltd.	Miyagi, Japan
JA Gifu Agri Kaihatsu Co., Ltd.	Gifu, Japan

## Investor Information

(As of March 31, 2005)

<b>Head Office</b>	Penta-Ocean Construction Co., Ltd. 2-8, Koraku 2-chome, Bunkyo-ku, Tokyo 112-8576, Japan Telephone: 81-3-3817-7181 Facsimile: 81-3-3817-7642
<b>Established</b>	April 1896
<b>Financial Year</b>	April 1 to March 31
<b>Common Stock</b>	Authorized: 599,135,000 Issued: 395,264,852
<b>Stock Listing</b>	Tokyo, Nagoya and Osaka Stock Exchanges, First Section
<b>Shareholders</b>	44,313
<b>Transfer Agency</b>	Mizuho Trust & Banking Co., Ltd. 2-1, Yaesu 1-chome, Chuo-ku, Tokyo 103-8670, Japan

## Major Shareholders

Shareholders	Shares held (thousands)	Percentage
Japan Trustee Services Bank, Ltd.	30,227	7.7
The Master Trust Bank of Japan (Trust Account)	18,642	4.7
Mizuho Corporate Bank, Ltd.	14,119	3.6
Meiji Yasuda Life Insurance Co.	13,312	3.4
Sompo Japan Insurance Inc.	12,226	3.1
The Tokyo Marine & Fire Insurance Co., Ltd.	8,567	2.2
Mizuho Trust & Banking Co., Ltd.	6,940	1.8
Trust & Custody Services Bank, Ltd. (Trust Account B)	5,678	1.4
Penta-Ocean Employees' Shareholding Association	5,198	1.3
Morgan Stanley & Co. International Ltd.	5,190	1.3