

Company Data

Company Outline

(As of March 31, 2017)

| | |
|------------------------|---|
| Company Name | Penta-Ocean Construction Co., Ltd. |
| Founded | April 1896 |
| Established | April 1950 |
| Head Office | 2-8, Koraku 2-chome, Bunkyo-ku, Tokyo 112-8576, Japan Tel: 81-3-3817-7181 Fax: 81-3-3817-7642 |
| Paid-in Capital | ¥30,450 million (U.S. \$271.4 million) |
| Employees | 2,572 (3,074 consolidated) |
| Website | http://www.penta-ocean.co.jp |

Members of the Board and Audit & Supervisory Board Members

(As of June 27, 2017)

President, Chief Executive Officer and Representative Director
Takuzo Shimizu

Executive Vice President, Representative Director

Kunihiko Sasaki Kazuya Ueda

Members of the Board

Akihiko Togo Yuji Nakamitsu Tetsushi Noguchi
Michio Inatomi Hiroshi Watanabe Yasuhiro Kawashima*
Hidenori Takahashi* Naoki Furuya*

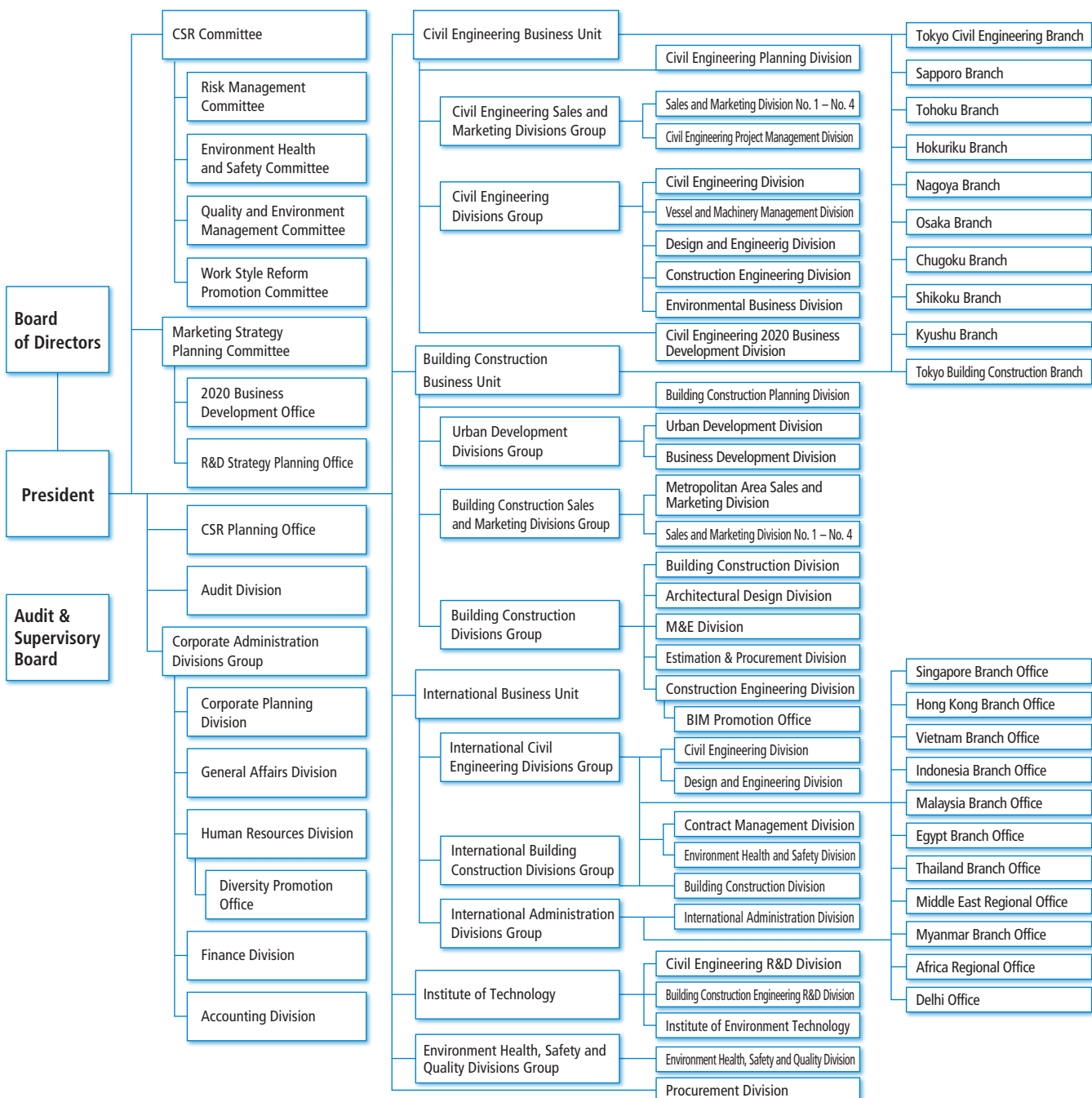
Audit & Supervisory Board Members

Takeshi Miyazono Hironaga Fukuda* Yoshiaki Ohashi*
Tatsuya Toyoshima*

* Indicates external members.

Organization Chart

(As of April 1, 2017)



Penta-Ocean Construction Network

(As of July 31, 2017)



1 Head Office

2-2-8, Koraku, Bunkyo-ku, Tokyo 112-8576, Japan
Tel: 81-3-3817-7181 Fax: 81-3-3817-7642

2 Singapore Branch Office

1 Kim Seng Promenade, #11-03, Great World City,
East Tower, 237994 Singapore
Tel: 65-6338-8966 Fax: 65-6337-0987

3 Hong Kong Branch Office

Unit 601, K Wah Centre, 191 Java Road, North Point,
Hong Kong
Tel: 852-2833-1098 Fax: 852-2572-4080

4 Vietnam Branch Office

4th Floor, 18 Tran Hung Dao Street, Hanoi, Vietnam
Tel: 84-24-3824-1360 Fax: 84-24-3824-1444

5 Indonesia Branch Office

Mid Plaza II, 24th Floor, JL. Jenderal Sudirman Kav. 10-11,
Jakarta 10220, Indonesia
Tel: 62-21-570-5484 Fax: 62-21-570-5485

6 Malaysia Branch Office

Suite 3B-20-6, Level 20, Block 3B Plaza Sentral,
Jalan Stesen Sentral 5
Kuala Lumpur Sentral 50470 Kuala Lumpur, Malaysia
Tel: 60-3-2260-6736 Fax: 60-3-2260-6737

7 Egypt Branch Office

27 El Falah Street, off Shehab Street, Flat No. 5, 2nd Floor,
Mohandeseen, Giza, Egypt
Tel: 20-2-3345-3207 Fax: 20-2-3345-3206

8 Thailand Branch Office

17th Floor, Room 1704, Vanit II Building, 1126/2
New Petchburi Road, Makkasan Rajthevee,
Bangkok 10400, Thailand
Tel: 66-2-069-2183 Fax: 66-2-069-2185

9 Middle East Regional Office

Office No.15424, Jafza LOB 15. P.O. Box 118791, Dubai, U.A.E.
Tel: 971-4-880-8824 Fax: 971-4-880-8834

10 Myanmar Branch Office

Room 202, La Pyayt Wun Plaza, No.37 Alanpya Pagoda Road,
Dagon Township, Yangon 11191 Myanmar
Tel: 95-1-370839 Fax: 95-1-370839

11 Africa Regional Office

Av. Julius Nyerere, no. 140, 5 Ander, Maputo, Mozambique
Tel: 258-84-866-6114 Fax: 258-21-483144

12 Delhi Office

Unit No.1120, 11th Floor, JMD Megapolis, Sector-48, Sohana Road,
Gurgaon-122018, Haryana, India
Tel: 91-124-436-8355 Fax: 91-124-436-8356

Consolidated Affiliates

| | |
|--|------------------|
| Penta–Ocean Dredging Co., Ltd. | Tokyo, Japan |
| Yoshin Construction Co., Ltd. | Hiroshima, Japan |
| Penta Builders Corporation | Tokyo, Japan |
| Kegoya Dock Co., Ltd. | Hiroshima, Japan |
| Penta Techno Service Co., Ltd. | Tochigi, Japan |
| Sand Techno Co., Ltd. | Chiba, Japan |
| Domi Environmental Solutions Co., Ltd. | Tokyo, Japan |
| Penta Insurance Services Co., Ltd. | Tokyo, Japan |
| Jaiwat Co., Ltd. | Miyagi, Japan |
| Miki Biotech Co., Ltd. | Hyogo, Japan |
| Penta–Ocean Marine Holdings Pte. Ltd. | Singapore |
| Andromeda Five Pte. Ltd. | Singapore |
| Cassiopeia Five Pte. Ltd. | Singapore |
| Mercury Five Pte. Ltd. | Singapore |
| Mars Five Pte. Ltd. | Singapore |
| Cherry Five Pte. Ltd. | Singapore |
| Penta–Ocean (Malaysia) SDN. BHD. | Malaysia |
| Angkutlaut Ltd. | Malaysia |

| | |
|---|-----------|
| PT. PENTA Ocean Construction | Indonesia |
| Siam Goyo Co., Ltd. | Thailand |
| Thai Penta–Ocean Co., Ltd. | Thailand |
| Penta–Ocean Construction (Hong Kong) Ltd. | Hong Kong |
| Penta–Ocean Construction (India) Pvt. Ltd. | India |
| Brichwood Co., Ltd. | Hong Kong |
| Penta–Ocean Technology Information Advisory (Shenzhen) Ltd. | China |

Equity Affiliate

| | |
|--|--------------|
| Haneda International Airport Apron PFI Co., Ltd. | Tokyo, Japan |
|--|--------------|

Non–Equity Affiliates

| | |
|--|------------------|
| Miyajima Aqua Partners Co., Ltd. | Hiroshima, Japan |
| Matsuyama Environment Technology Co., Ltd. | Ehime, Japan |

Investor Information

(As of March 31, 2017)

| | |
|------------------------|---|
| Fiscal Year | April 1 – March 31 |
| Common Stock | Authorized: 599,135,000 Issued: 285,903,296 (excluding 110,614 shares of treasury stock) |
| Stock Listing | First Section of the Tokyo and Nagoya Stock Exchanges |
| Shareholders | 39,241 |
| Transfer Agency | Mizuho Trust & Banking Co., Ltd. 2–8–4, Izumi, Suginami–ku, Tokyo 168–8507, Japan |

Major Shareholders

| Shareholders | Number of shares held (thousands) | Percentage of shares held (%) |
|--|-----------------------------------|-------------------------------|
| Japan Trustee Service Bank, Ltd. (Trust Account) | 32,783 | 11.5 |
| The Master Trust Bank of Japan, Ltd. (Trust Account) | 12,969 | 4.5 |
| Mizuho Bank, Ltd. | 7,059 | 2.5 |
| Meiji Yasuda Life Insurance Co. | 6,656 | 2.3 |
| JUNIPER | 5,318 | 1.9 |
| Japan Trustee Services Bank, Ltd. (Trust Account) | 4,568 | 1.6 |
| NOMURA BANK (LUXEMBOURG) S.A. S/A NOMURA MULTI CURRENCY JAPAN STOCK LEADERS FUND | 4,480 | 1.6 |
| Sompo Japan Nipponkoa Insurance Inc. | 4,280 | 1.5 |
| Citibank, N.A., Tokyo Branch | 4,162 | 1.5 |
| Tokio Marine & Nichido Fire Insurance Co., Ltd. | 3,934 | 1.4 |