

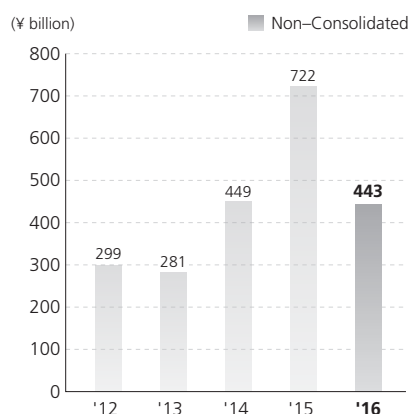
Consolidated Financial Highlights

Penta–Ocean Construction Co., Ltd. and Consolidated Subsidiaries
For the years ended March 31

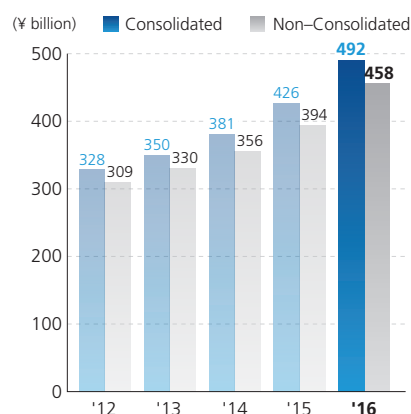
	Millions of yen		Thousands of U.S. dollars
	2015	2016	2016
Net Sales	¥426,238	¥491,564	\$4,362,478
Total Assets	366,170	378,766	3,361,433
Net Assets Excluding Non-Controlling Interests	77,033	80,588	715,191
Ordinary Income	11,393	19,409	172,245
Income before Income Taxes and Non-Controlling Interests	10,176	14,242	126,396
Net Income	6,183	7,806	69,274
Cash Dividends	1,144	1,715	15,224
Per share of common stock:			
	Yen		U.S. dollars
Net Assets Excluding Non-Controlling Interests	¥269.44	¥281.87	\$2.50
Net Income	21.63	27.30	0.24
Cash Dividends	4.00	6.00	0.05

Note: Figures in U.S. dollars are converted for convenience only, at the rate of ¥112.68 per U.S.\$1, prevailing on March 31, 2016.

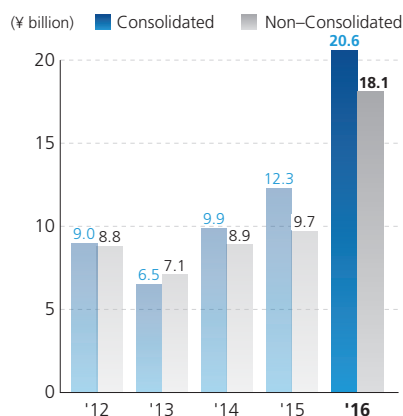
Orders Received



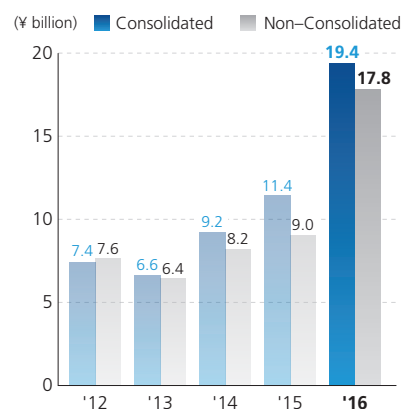
Net Sales



Operating Income



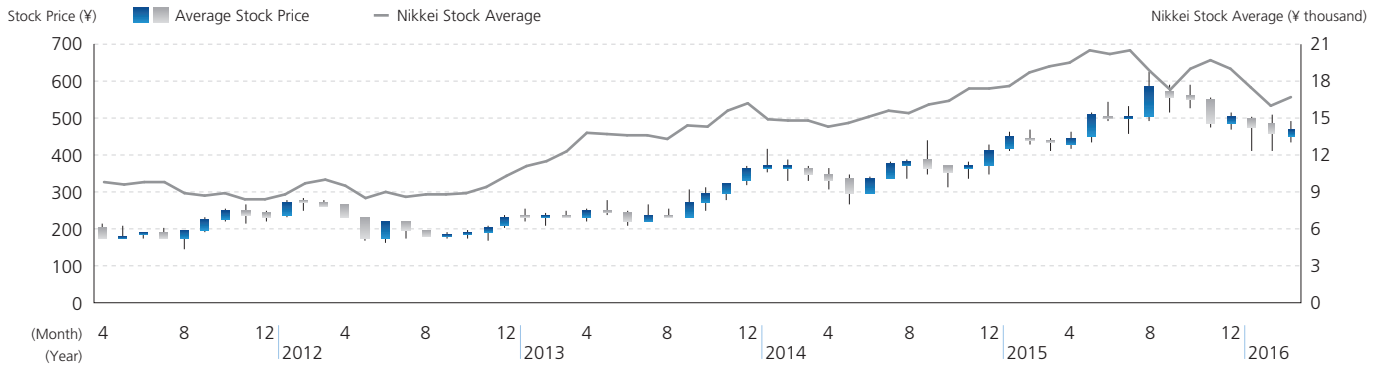
Ordinary Income



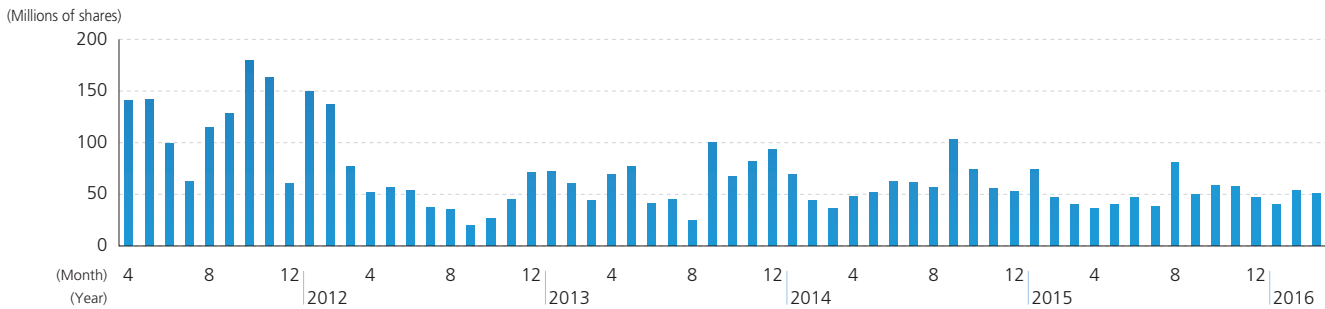
Disclaimer

The information contained in this annual report concerning Penta–Ocean Construction Co., Ltd.'s forward-looking statements and management plans are based on information available to the company at the time that it was created. Please note that actual results may differ from the forecasts indicated here due to a variety of future factors.

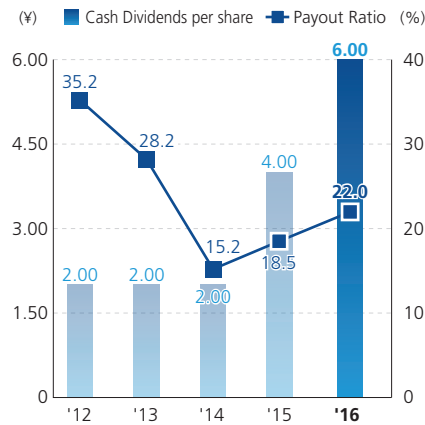
Stock Price Range



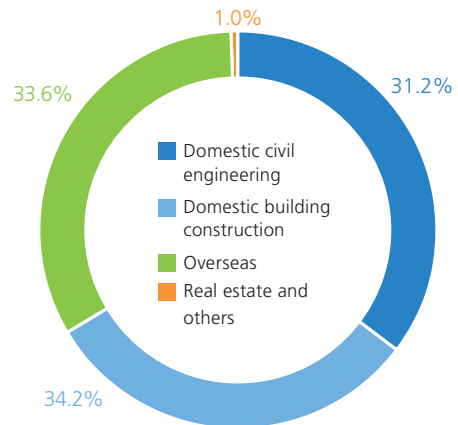
Trading Volume



Cash Dividends per Share and Payout Ratio



Sales by Segments

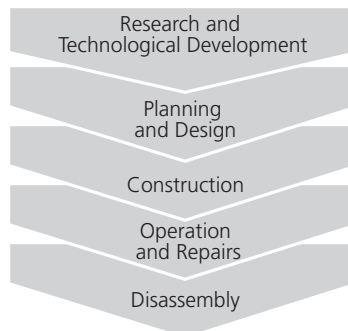


Business Activities and Environmental Burden

INPUT

Power (kWh)*	10,362,000
Light oil (kl)	26,162,000
Heavy oil (kl)	24,551,000
Kerosene (kl)*	135,000
Concrete (t)	1,147,000
Asphalt concrete (t)	79,000
Rubble (m ³)	888,000
Earth and sand (m ³)	1,496,000

* Site + office combined number



OUTPUT

Amount of CO ₂ emissions (t-CO ₂)	142,000
Amount of construction waste (t)	483,000
Final disposal rate (%)	2.8
Recycling rate (%)	97.2
Amount of soil generated from construction (m ³)	2,722,000

Environmental conservation/
restoration and communication

Creation of abundant environments

Handing over to the
next generation