

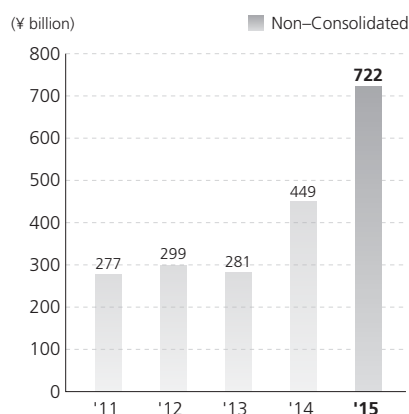
Consolidated Financial Highlights

Penta–Ocean Construction Co., Ltd. and Consolidated Subsidiaries
For the years ended March 31

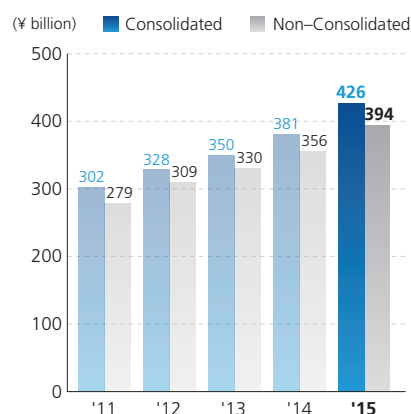
	Millions of yen		Thousands of U.S. dollars
	2014	2015	2015
Net Sales	¥381,182	¥426,238	\$3,546,956
Total Assets	301,627	366,170	3,047,099
Net Assets Excluding Minority Interests	67,339	77,033	641,034
Ordinary Income	9,160	11,393	94,808
Income before Income Taxes and Minority Interests	8,740	10,176	84,683
Net Income	3,763	6,183	51,456
Cash Dividends	572	1,144	9,517
Per share of common stock:			
	Yen		U.S. dollars
Net Assets Excluding Minority Interests	¥235.53	¥269.44	\$2.24
Net Income	13.16	21.63	0.18
Cash Dividends	2.00	4.00	0.03

Note: Figures in U.S. dollars are converted for convenience only, at the rate of ¥120.17 per U.S.\$1, prevailing on March 31, 2015.

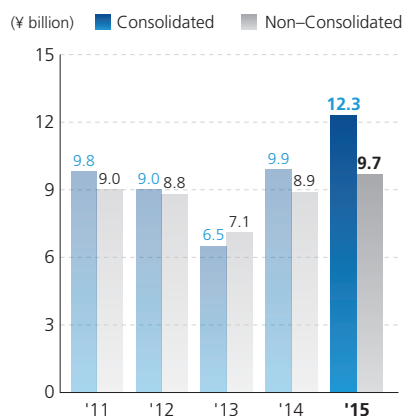
Orders Received



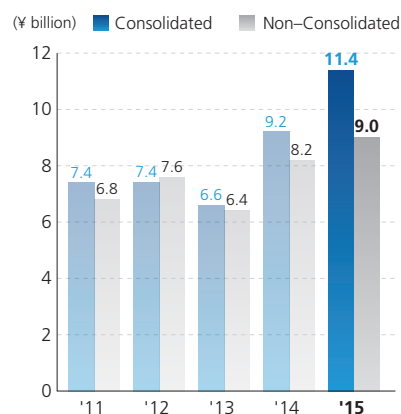
Net Sales



Operating Income



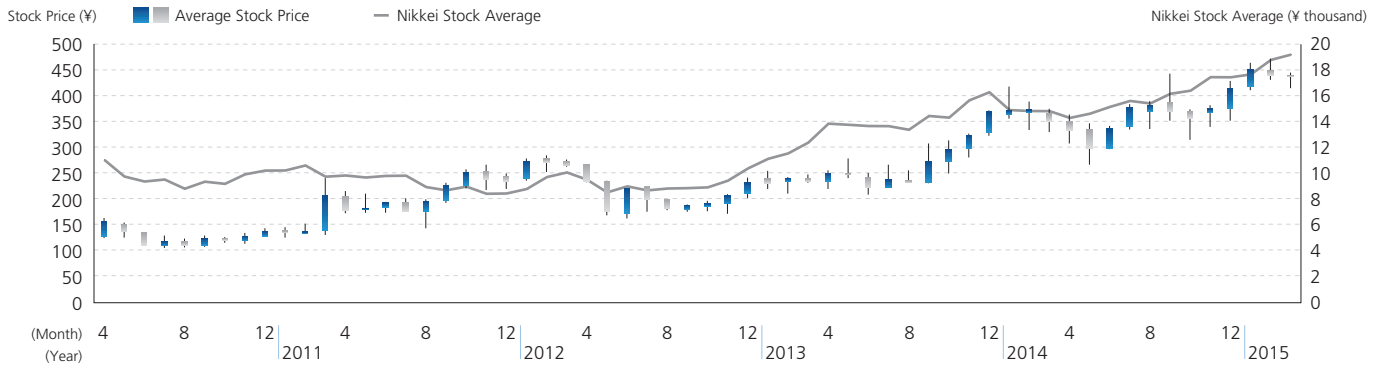
Ordinary Income



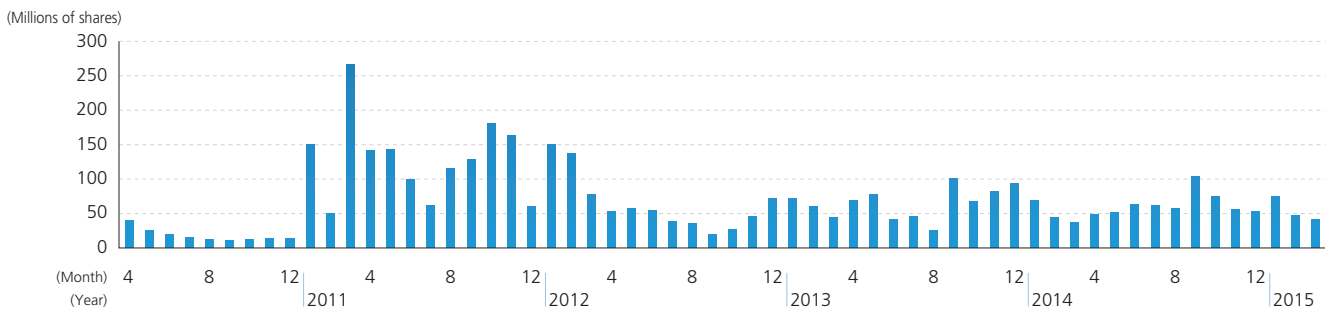
Disclaimer

The information contained in this annual report concerning Penta–Ocean Construction Co., Ltd.'s forward–looking statements and management plans are based on information available to the company at the time that it was created. Please note that actual results may differ from the forecasts indicated here due to a variety of future factors.

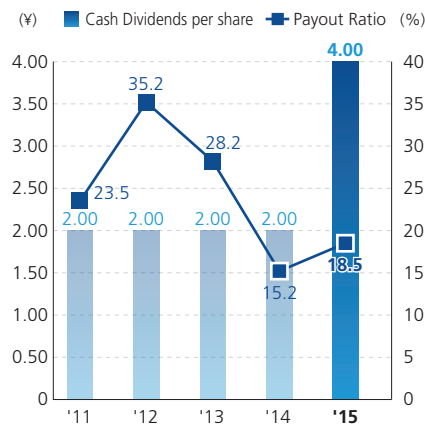
Stock Price Range



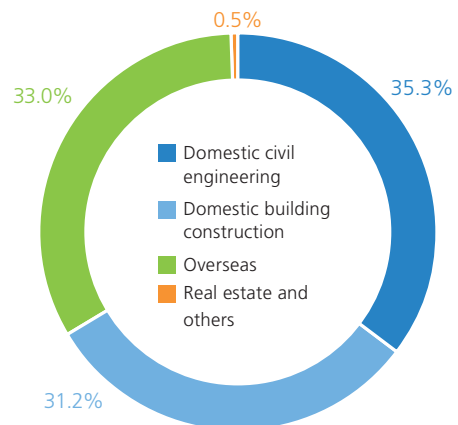
Trading Volume



Cash Dividends per Share and Payout Ratio



Sales by Segments

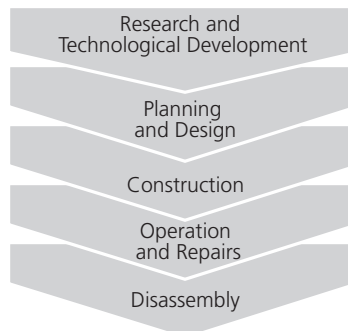


Business Activities and Environmental Burden

INPUT

Power (kWh)*	12,185,000
Light oil (kl)	19,906,000
Heavy oil (kl)	19,987,000
Kerosene (kl)*	140
Concrete (t)	895,000
Asphalt concrete (t)	60,000
Rubble (m ³)	920,000
Earth and sand (m ³)	1,597,500

* Site + office combined number



OUTPUT

Amount of CO ₂ emissions (t-CO ₂)	112,000
Amount of construction waste (t)	436,000
Final disposal rate (%)	3.2%
Recycling rate (%)	96.8%
Amount of soil generated from construction (m ³)	694,000

Environmental conservation/
restoration and communication

Creation of abundant environments

Handing over to the
next generation