

# COMPANY DATA

(As of March 31, 2009)

## Company Outline

<b>Company Name</b>	Penta-Ocean Construction Co., Ltd.
<b>Established</b>	April 1896
<b>Head Office</b>	2-8, Koraku 2-chome, Bunkyo-ku, Tokyo 112-8576, Japan Tel: 81-3-3817-7181 Fax: 81-3-3817-7642
<b>Paid-in Capital</b>	¥28,070 million (US\$280.2 million)
<b>Employees</b>	2,731
<b>Website</b>	www.penta-ocean.co.jp

## Board of Directors and Auditors (As of March 31, 2009)

### President and Representative Director

Yoshio Murashige

### Representative Directors

Kazuyuki Kawakami Hayuru Tsuda

### Directors

Kiyoshi Ida	Kosuke Kondo	Yoshihisa Takimoto
Masafumi Saito	Kunihiko Sasaki	Yoshihisa Tomoda

### Corporate Auditors

Hirosuke Kawamoto	Kaoru Kurokawa	Takaaki Komatsu
Masatami Sasano		

## Penta-Ocean Construction Group

### Consolidated Subsidiaries

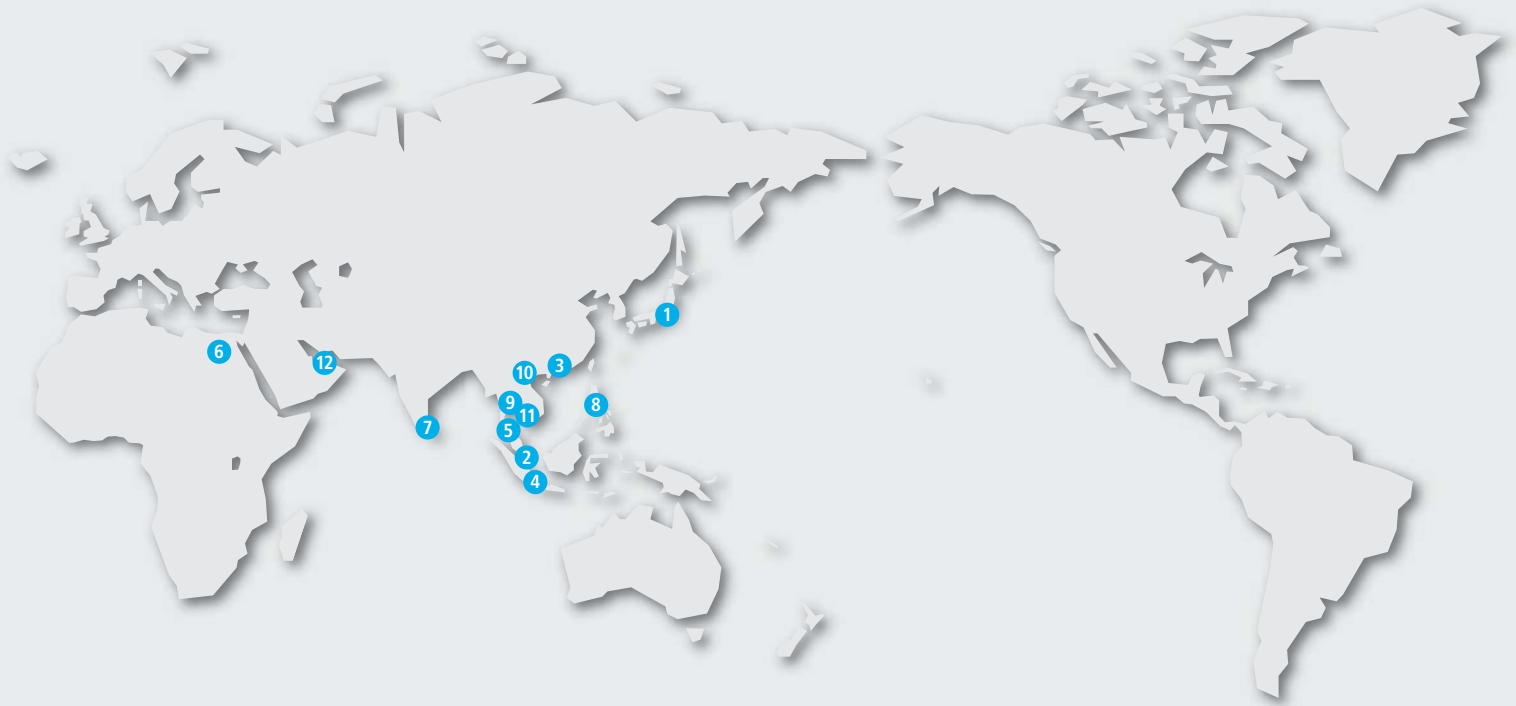
Penta-Ocean Dredging Co., Ltd.	Tokyo, Japan
Yoshin Construction Co., Ltd.	Hiroshima, Japan
Penta Builders Corporation	Tokyo, Japan
Obama Marine Co., Ltd.	Nagasaki, Japan
Coast Creation General Corporation Aggregate	Tokyo, Japan
New port development LLC	Tokyo, Japan
Kegoya Dock Co., Ltd.	Hiroshima, Japan
Penta Techno Service Co., Ltd.	Tochigi, Japan
Sand Techno Co., Ltd.	Chiba, Japab
Domi Environmental Solutions	Tokyo, Japan
Penta Insurance Services Co., Ltd.	Tokyo, Japan
Penta-Ocean (Malaysia) SDN. BHD.	Malaysia
Siam Goyo Co., Ltd.	Thailand
Thai Penta-Ocean Co., Ltd.	Thailand
Penta-Ocean Construction (Hong Kong) Ltd.	Hong Kong
Nicosia Co., Ltd.	Hong Kong
Brichwood Co., Ltd.	Hong Kong
Penta-Ocean Dredging Panama Inc.	Panama

Cosmo Transport Panama Inc.	Panama
Gloria transport Inc.	Panama
Reina Del Mar Transport Inc.	Panama
Vient Del Mar Transport Inc.	Panama
Belleza Del Mar Transport Inc.	Panama
Sol Del Mar Transport Inc.	Panama
Angkutlaut Ltd.	Malaysia
Penta-Ocean Technology Information Advisory (Shenzhen) Ltd.	China

### Consolidated Affiliats

Jiwat Co., Ltd.	Miyagi, Japan
Haneda Airport International Airline Apron PFI	Tokyo, Japan
Miyajima Aquq Partners Co., Ltd.	Hiroshima, Japan
Matsuyama Environmental Technology Co., Ltd.	Ehime, Japan

## Penta-Ocean Construction Network



### 1 HEAD OFFICE

2-8, Koraku 2-chome, Bunkyo-ku, Tokyo 112-8576, Japan  
Tel: 81-3-3817-7181 Fax: 81-3-3817-7642

### 2 SINGAPORE OFFICE

1 Kim Seng Promenade #13-01/02, Great World City, East Tower, Singapore 237994  
Tel: 65-6338-8966 Fax: 65-6337-0987

### 3 HONG KONG OFFICE

Unit 601, K Wah Center, 191 Java Road, North Point, Hong Kong  
Tel: 852-2833-1098 Fax: 852-2572-4080

### 4 INDONESIA OFFICE

Mid Plaza II, 24th Floor, JL. Jenderal Sudirman Kav. 10-11, Jakarta 10220, Indonesia  
Tel: 62-21-570-5484 Fax: 62-21-570-5485

### 5 MALAYSIA OFFICE

508, 5th Floor, Block A, Kelana Business Centre 97, Jalan SS 7/2, Kelana Jaya, 47301 Petaling Jaya, Selangor Darul Ehsan, Malaysia  
Tel: 60-3-7492-2208 Fax: 60-3-7492-2209

### 6 EGYPT OFFICE

27 El Falah Street, off Shehab Street, Flat No. 5, 2nd Floor, Mohandeseen, Giza, Egypt  
Tel: 20-2-3345-3207 Fax: 20-2-3345-3206

### 7 COLOMBO OFFICE

P.O. Box 383, No. 3-2, CBM House No. 2A, Lake Drive, Colombo 8, Sri Lanka  
Tel: 94-11-2690316 Fax: 94-11-2671944

### 8 MANILA OFFICE

Unit A1, 2nd Floor Almeda Arcade, 1014 Pasay Road, Makati City, Philippines  
Tel: 63-2-752-8997 Fax: 63-2-752-8996

### 9 BANGKOK OFFICE

11th Floor, Room 1106, Vanit II Building, 1126/2, New Petchburi Road, Makkasan Rajthevee, Bangkok 10400, Thailand  
Tel: 66-2-655-2183 Fax: 66-2-655-2185

### 10 HANOI OFFICE

4th Floor, 18 Tran Hung Dao Street, Hanoi, Vietnam  
Tel: 84-4-824-1360 Fax: 84-4-824-1444

### 11 PHNOM PENH OFFICE

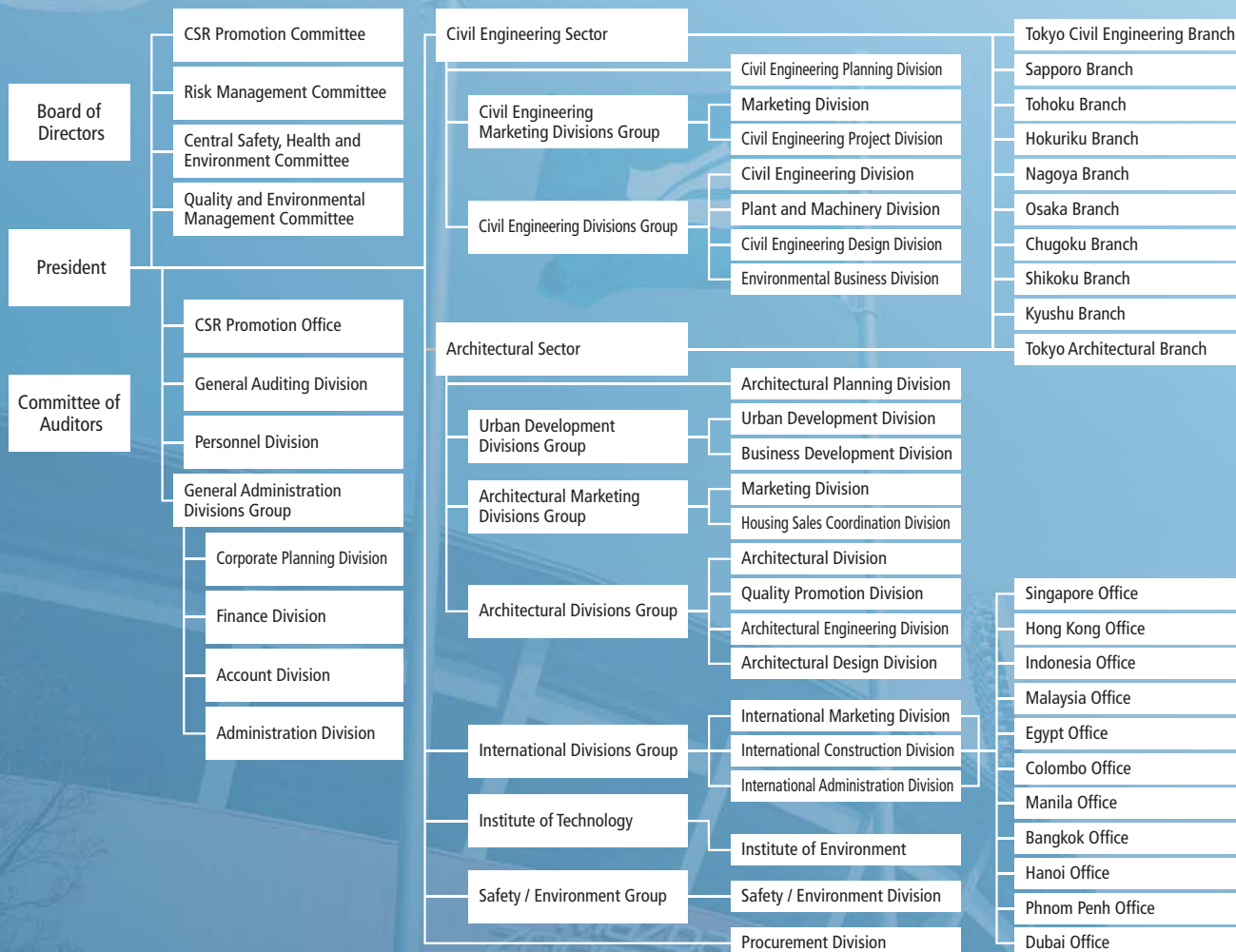
P. O. Box 2422, Phnom Penh III, No. F20, France Street, Norodom Road, Borei Chamkamorn, Khan Chamkamorn, Phnom Penh, Cambodia  
Tel: 855-23-360463 Fax: 855-23-360462

### 12 DUBAI OFFICE

P.O. Box 118791, #612, Al Khaleej Centre, Bur Dubai, Dubai, U.A.E.  
Tel: 971-4-359-8677 Fax: 971-4-359-8678

## Organization Chart

(As of April 1, 2009)



## Investor Information

(As of March 31, 2009)

<b>Fiscal Year</b>	March 31 of each year
<b>Common Stock</b>	Authorized: 599,135,000 Issued: 245,763,910
<b>Stock Listing</b>	First Section, Tokyo Osaka Nagoya Stock Exchange
<b>Shareholders</b>	47,658
<b>Transfer Agency</b>	Mizuho Trust & Banking Co., Ltd. 2-8-4, Izumi, Suginami-ku, Tokyo 168-8507, Japan

## Major Shareholders

Shareholders	Shares held (thousands)	Voting right ratio (%)
Japan Trustee Service Bank, Ltd. (Trust Account 4G)	10,880	4.4
Japan Trustee Service Bank, Ltd. (Trust Account)	10,335	4.2
The Master Trust Bank of Japan (Trust Account)	7,062	2.9
Mizuho Corporate Bank, Ltd.	7,059	2.9
Meiji Yasuda Life Insurance Co.	6,656	2.7
Sompo Japan Insurance Inc.	6,113	2.5
Japan Trustee Service Bank, Ltd. (Trust Account 4G)	5,483	2.2
Tokyo Marine & Nichido Fire Insurance Co., Ltd.	3,934	1.6
Penta-Ocean Employee Stock Ownership Plan	3,744	1.5
Mizuho Trust & Banking Co., Ltd.	3,470	1.4