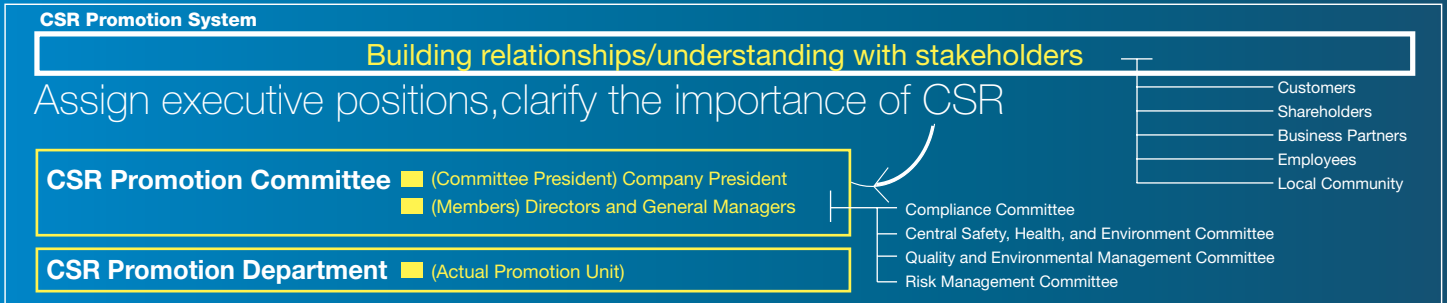


# CSR (Corporate Social Responsibility)

The new medium-term management program "Evolution 21" is an important part of the company-wide CSR basic policy. Having defined our management principles and medium-term vision, we are implementing these changes throughout the entire company. The details of the CSR basic policy will be discussed below. A CSR promotion committee has also been established. Executive positions have been assigned, with the company president as committee president, and all directors and general managers as members.



## CSR Basic Policy

At Penta-Ocean, we live by the philosophy of "Build a better society through the construction of superior infrastructure". As such, by providing reliable quality backed by advanced technology and regard for safety and the environment, we aim to be a company that stands out not only to stockholders, customers, business partners, and employees, but as a model corporation respected by society.

- 1 Honorable Corporate Activities**  
Business activities must be in accordance with the law, socially acceptable, and morally just.
- 2 Coexistence with the Environment and Nature**
  - Construct environmental friendly structures and develop environmental technology to preserve the planet earth.
  - Develop comprehensive disaster prevention technology to produce structures that provide a high quality living strong enough against disasters.
  - Implement rapid response support activities for times of emergency.
- 3 Respect for Humanity**
  - Respect the individuality of each employee, and create a working environment where each one can demonstrate their best and be rewarded.
  - Respect for human rights and the diversity of all people connected with the company.
- 4 Communication with Society**  
Strive for excellent communication with stakeholders (shareholders, customers, business partners, employees, and the local community), the timely appropriate disclosure of information and maximum accountability.

## Examples of CSR in Action

### Okinawa Naha Underground Tunnel Study on Barrier-Free Construction

The Naha underground tunnel connects the Okinawa's Naha Airport and Migushiku in Naha City. The sections of the tunnel have no internal barriers and a temporary staircase with hand railing and slope was set up so that the handicapped and elderly could participate in the study. The study included such highlights as models of the "Bellows Joint", developed by Penta Ocean and used for the first time in this tunnel, videos showcasing the underground tunnel, and panel exhibits. The study was a success and the participants thoroughly enjoyed the event.



### Fukuoka Takehara Tunnel On-Site PR Activities

The Takehara Tunnel was awarded the special "Citizens Award" at the "First Citizens Choice Civil Engineering Publicity Awards" hosted last year by Nikkei Construction. Receiving this award demonstrates the success of our PR campaign in improving the image of civil engineering with the public. We aggressively sought to interact with the people living in the surrounding area of the site during the construction of the Takehara Tunnel. Pictures of the construction process were displayed in the office near the tunnel entrance. Tours of the tunnel entrance were provided, and the special food of the area was introduced as a seasonal gift idea to all company employees. Through this, we built relationships with and earned the trust of the local people.

