

# Company Data

## Company Outline

(As of March 31, 2016)

<b>Company Name</b>	Penta-Ocean Construction Co., Ltd.
<b>Established</b>	April 1896
<b>Head Office</b>	2-8, Koraku 2-chome, Bunkyo-ku, Tokyo 112-8576, Japan Tel: 81-3-3817-7181 Fax: 81-3-3817-7642
<b>Paid-in Capital</b>	¥30,450 million (U.S.\$270.2 million)
<b>Employees</b>	2,522 (3,025 consolidated)
<b>Website</b>	http://www.penta-ocean.co.jp

## Members of the Board and Audit & Supervisory Board Members

(As of June 24, 2016)

**President, Chief Executive Officer and Representative Director**  
Takuzo Shimizu

**Executive Vice President, Representative Director**  
Kunihiko Sasaki

### Members of the Board

Akihiko Togo Kazuya Ueda Yuji Nakamitsu  
Tetsushi Noguchi Shinichi Igarashi Michio Inatomi  
Hisanori Ohara\* Yasuhiro Kawashima\*

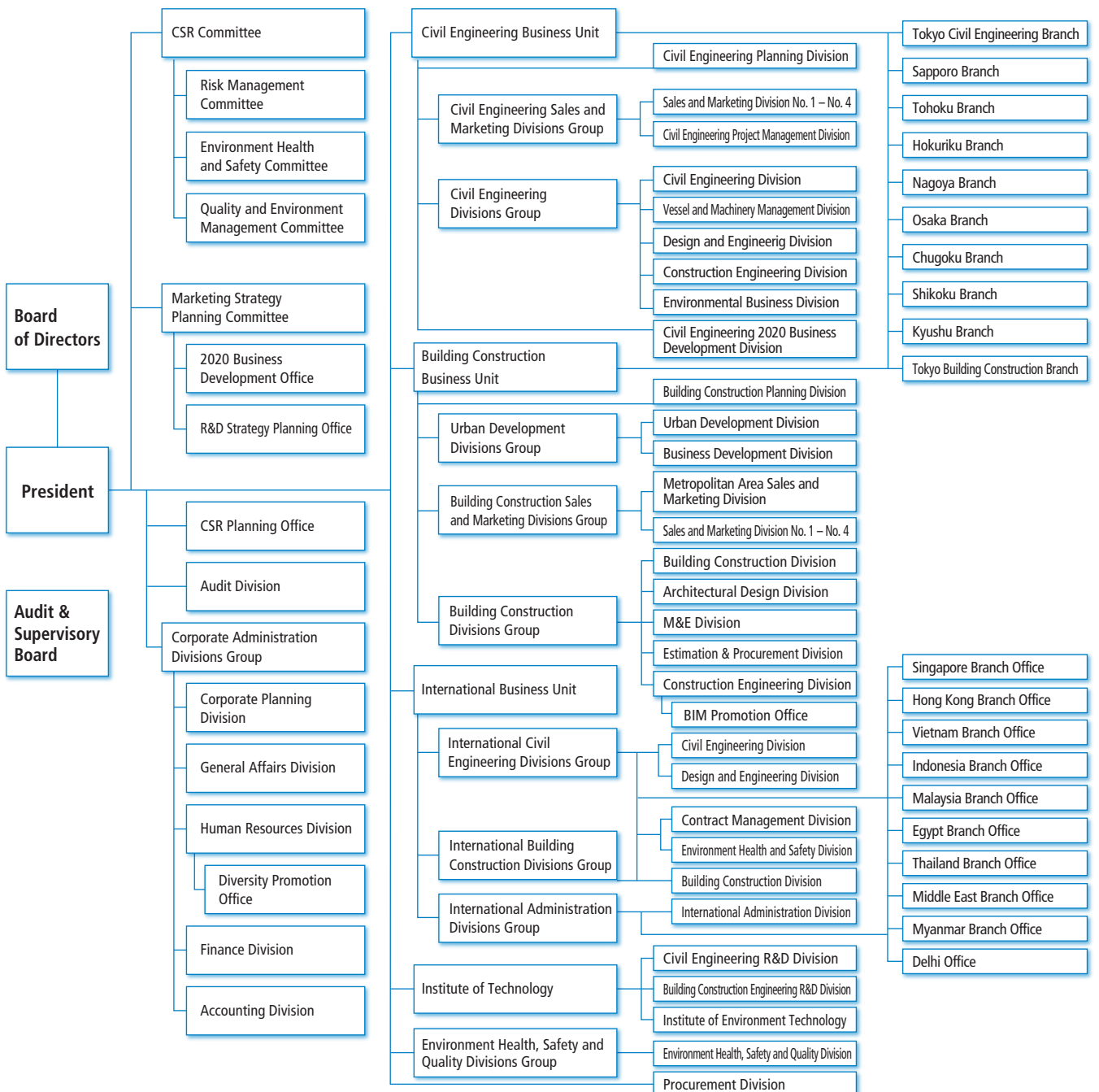
### Audit & Supervisory Board Members

Takeshi Miyazono Hironaga Fukuda\* Yoshiaki Ohashi\*  
Tatsuya Toyoshima\*

\* Indicates external members.

## Organization Chart

(As of April 1, 2016)





### 1 HEAD OFFICE

2-2-8, Koraku, Bunkyo-ku, Tokyo 112-8576, Japan  
Tel: 81-3-3817-7181 Fax: 81-3-3817-7642

### 2 SINGAPORE BRANCH OFFICE

1 Kim Seng Promenade, #11-03, Great World City,  
East Tower, 237994 Singapore  
Tel: 65-6338-8966 Fax: 65-6337-0987

### 3 HONG KONG BRANCH OFFICE

Unit 601, K Wah Centre, 191 Java Road, North Point,  
Hong Kong  
Tel: 852-2833-1098 Fax: 852-2572-4080

### 4 VIETNAM BRANCH OFFICE

4th Floor, 18 Tran Hung Dao Street, Hanoi, Vietnam  
Tel: 84-4-3824-1360 Fax: 84-4-3824-1444

### 5 INDONESIA BRANCH OFFICE

Mid Plaza II, 24th Floor, JL. Jenderal Sudirman Kav. 10-11,  
Jakarta 10220, Indonesia  
Tel: 62-21-570-5484 Fax: 62-21-570-5485

### 6 MALAYSIA BRANCH OFFICE

Suite 3B-20-6, Level 20, Block 3B Plaza Sentral,  
Jalan Stesen Sentral 5  
Kuala Lumpur Sentral 50470 Kuala Lumpur, Malaysia  
Tel: 60-3-2260-6736 Fax: 60-3-2260-6737

### 7 EGYPT BRANCH OFFICE

27 El Falah Street, off Shehab Street, Flat No. 5, 2nd Floor,  
Mohandeseen, Giza, Egypt  
Tel: 20-2-3345-3207 Fax: 20-2-3345-3206

### 8 THAILAND BRANCH OFFICE

17th Floor, Room 1704, Vanit II Building, 1126/2  
New Petchburi Road, Makkasan Rajthevee,  
Bangkok 10400, Thailand  
Tel: 66-2-655-2183 Fax: 66-2-655-2185

### 9 MIDDLE EAST BRANCH OFFICE

Office No.15424, Jafza LOB 15. P.O. Box 118791, Dubai, U.A.E.  
Tel: 971-4-880-8824 Fax: 971-4-880-8834

### 10 MYANMAR BRANCH OFFICE

Room 202, La Pyayt Wun Plaza, No.37 Alanpya Pagoda Road,  
Dagon Township, Yangon 11191 Myanmar  
Tel: 95-1-370839 Fax: 95-1-370839

### 11 DELHI OFFICE

Unit No.1120, 11th Floor, JMD Megapolis, Sector-48, Sohana Road,  
Gurgaon-122018, Haryana, India  
Tel: 91-124-436-8355 Fax: 91-124-436-8356

### Consolidated Affiliates

Penta–Ocean Dredging Co., Ltd.	Tokyo, Japan
Yoshin Construction Co., Ltd.	Hiroshima, Japan
Penta Builders Corporation	Tokyo, Japan
Kegoya Dock Co., Ltd.	Hiroshima, Japan
Penta Techno Service Co., Ltd.	Tochigi, Japan
Sand Techno Co., Ltd.	Chiba, Japan
Domi Environmental Solutions Co., Ltd.	Tokyo, Japan
Penta Insurance Services Co., Ltd.	Tokyo, Japan
Jaiwat Co., Ltd.	Miyagi, Japan
Miki Biotech Co., Ltd.	Hyogo, Japan
Penta–Ocean Marine Holdings Pte. Ltd.	Singapore
Andromeda Five Pte. Ltd.	Singapore
Cassiopeia Five Pte. Ltd.	Singapore
Mercury Five Pte. Ltd.	Singapore
Mars Five Pte. Ltd.	Singapore
Jupiter Five Pte. Ltd.	Singapore
Neptune Five Pte. Ltd.	Singapore
Cherry Five Pte. Ltd.	Singapore

Penta–Ocean (Malaysia) SDN. BHD.	Malaysia
Angkutlaut Ltd.	Malaysia
PT. PENTA Ocean Construction	Indonesia
Siam Goyo Co., Ltd.	Thailand
Thai Penta–Ocean Co., Ltd.	Thailand
Penta–Ocean Construction (Hong Kong) Ltd.	Hong Kong
Penta–Ocean Construction (India) Pvt. Ltd.	India
Brichwood Co., Ltd.	Hong Kong
Penta–Ocean Technology Information Advisory (Shenzhen) Ltd.	China

### Equity Affiliate

Haneda International Airport Apron PFI Co., Ltd.	Tokyo, Japan
--	--------------

### Non–Equity Affiliates

Miyajima Aqua Partners Co., Ltd.	Hiroshima, Japan
Matsuyama Environment Technology Co., Ltd.	Ehime, Japan
Mito Environment Technology Co., Ltd.	Ibaraki, Japan

### Investor Information

(As of March 31, 2016)

<b>Fiscal Year</b>	April 1 – March 31
<b>Common Stock</b>	Authorized: 599,135,000 Issued: 285,903,958 (excluding 109,952 shares of treasury stock)
<b>Stock Listing</b>	First Section of the Tokyo and Nagoya Stock Exchanges
<b>Shareholders</b>	35,050
<b>Transfer Agency</b>	Mizuho Trust & Banking Co., Ltd. 2–8–4, Izumi, Suginami–ku, Tokyo 168–8507, Japan

### Major Shareholders

Shareholders	Number of shares held (thousands)	Percentage of shares held (%)
Japan Trustee Service Bank, Ltd. (Trust Account)	41,746	14.6
The Master Trust Bank of Japan, Ltd. (Trust Account)	15,957	5.6
Mizuho Bank, Ltd.	7,059	2.5
Meiji Yasuda Life Insurance Co.	6,656	2.3
CHASE MANHATTAN BANK GTS CLIENTS ACCOUNT ESCROW	5,781	2.0
JUNIPER	5,039	1.8
NOMURA BANK (LUXEMBOURG) S.A. S/A NOMURA MULTI CURRENCY JAPAN STOCK LEADERS FUND	4,833	1.7
Sompo Japan Nipponkoa Insurance Inc.	4,280	1.5
Tokio Marine & Nichido Fire Insurance Co., Ltd.	3,934	1.4
Mizuho Securities Co., Ltd.	3,604	1.2