

Company Outline

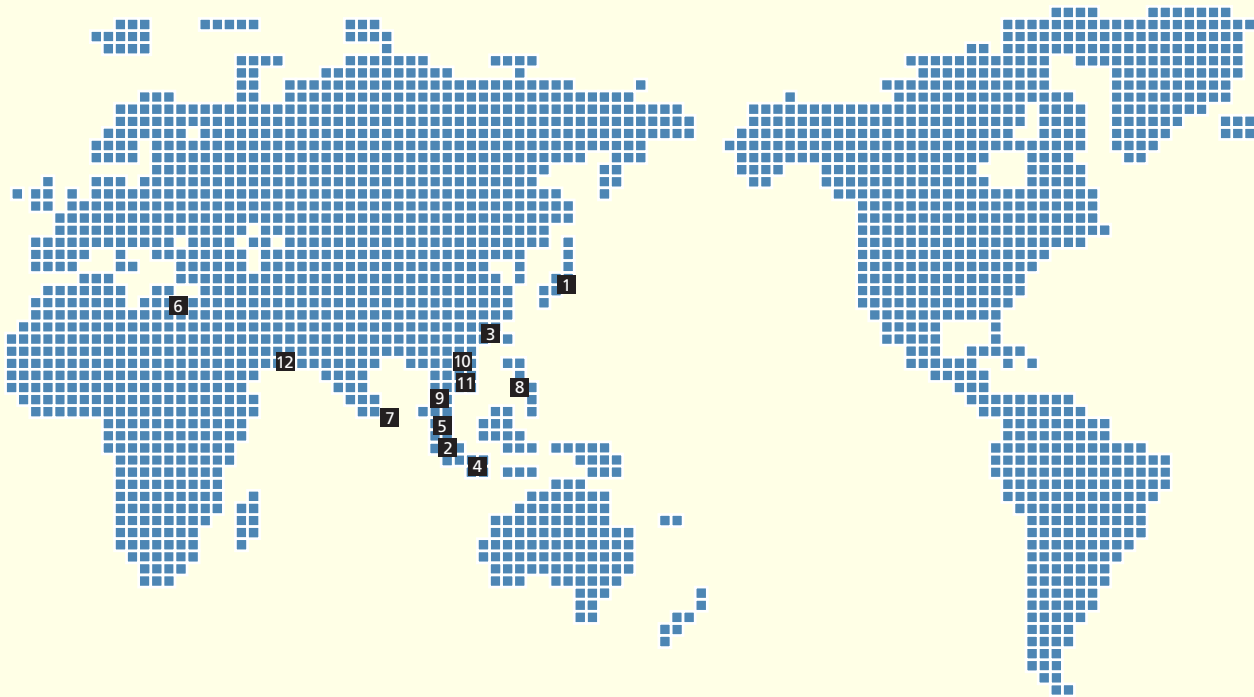
Company Name	Penta-Ocean Construction Co., Ltd.
Established	April 1896
Head Office	2-8, Koraku 2-chome, Bunkyo-ku, Tokyo 112-8576, Japan Tel: 81-3-3817-7181 Fax: 81-3-3817-7642
Paid-in Capital	¥28,070 million (US\$280.2 million)
Employees	2,778
Website	www.penta-ocean.co.jp

Board of Directors and Auditors

(As of June 27, 2008)

President and Representative Director	Yoshio Murashige
Representative Directors	Kazuyuki Kawakami Hayuru Tsuda
Directors	Kiyoshi Ida Kosuke Kondo Yoshihisa Takimoto Masafumi Saito Kunihiko Sasaki Yoshihisa Tomoda
Corporate Auditors	Hirosuke Kawamoto Kaoru Kurokawa Takaaki Komatsu Masatami Sasano

Penta-Ocean Construction Network



1 HEAD OFFICE

2-8, Koraku 2-chome, Bunkyo-ku, Tokyo 112-8576, Japan
Tel: 81-3-3817-7181 Fax: 81-3-3817-7642

2 SINGAPORE OFFICE

1 Kim Seng Promenade #13-01/02, Great World City, East Tower, Singapore 237994
Tel: 65-6338-8966 Fax: 65-6337-0987

3 HONG KONG OFFICE

Unit 601, K Wah Center, 191 Java Road, North Point, Hong Kong
Tel: 852-2833-1098 Fax: 852-2572-4080

4 INDONESIA OFFICE

Mid Plaza II, 24th Floor, JL. Jenderal Sudirman Kav. 10-11, Jakarta 10220, Indonesia
Tel: 62-21-570-5484 Fax: 62-21-570-5485

5 MALAYSIA OFFICE

508, 5th Floor, Block A, Kelana Business Centre 97, Jalan SS 7/2, Kelana Jaya, 47301 Petaling Jaya, Selangor Darul Ehsan, Malaysia
Tel: 60-3-7492-2208 Fax: 60-3-7492-2209

6 EGYPT OFFICE

27 El Falah Street, off Shehab Street, Flat No. 5, 2nd Floor, Mohandeseen, Giza, Egypt
Tel: 20-2-3345-3207 Fax: 20-2-3345-3206

7 COLOMBO OFFICE

P.O. Box 383, No. 3-2, CBM House No. 2A, Lake Drive, Colombo 8, Sri Lanka
Tel: 94-11-2690316

8 MANILA OFFICE

Unit A1, 2nd Floor Almeda Arcade, 1014 Pasay Road, Makati City, Philippines
Tel: 63-2-752-8997 Fax: 63-2-752-8996

9 BANGKOK OFFICE

11th Floor, Room 1106, Vanit II Bldg. 1126/2, New Petchburi Road, Makkasan Rajthevee, Bangkok 10400, Thailand
Tel: 66-2-655-2183 Fax: 66-2-655-2185

10 HANOI OFFICE

4th Floor, 18 Tran Hung Dao Street, Hanoi, Vietnam
Tel: 84-4-824-1360 Fax: 84-4-824-1444

11 PHNOM PENH OFFICE

P. O. Box 2422, Phnom Penh III, No. F20, France Street, Norodom Road, Borei Chamkamorn, Khan Chamkamorn, Phnom Penh, Cambodia
Tel: 855-23-360463 Fax: 855-23-360462

12 DUBAI OFFICE

P.O. Box 118791, #612, Al Khaleej Centre, Bur Dubai, Dubai, United Arab Emirates
Tel: 971-4-359-8677 Fax: 971-4-359-8678

Penta-Ocean Construction Group

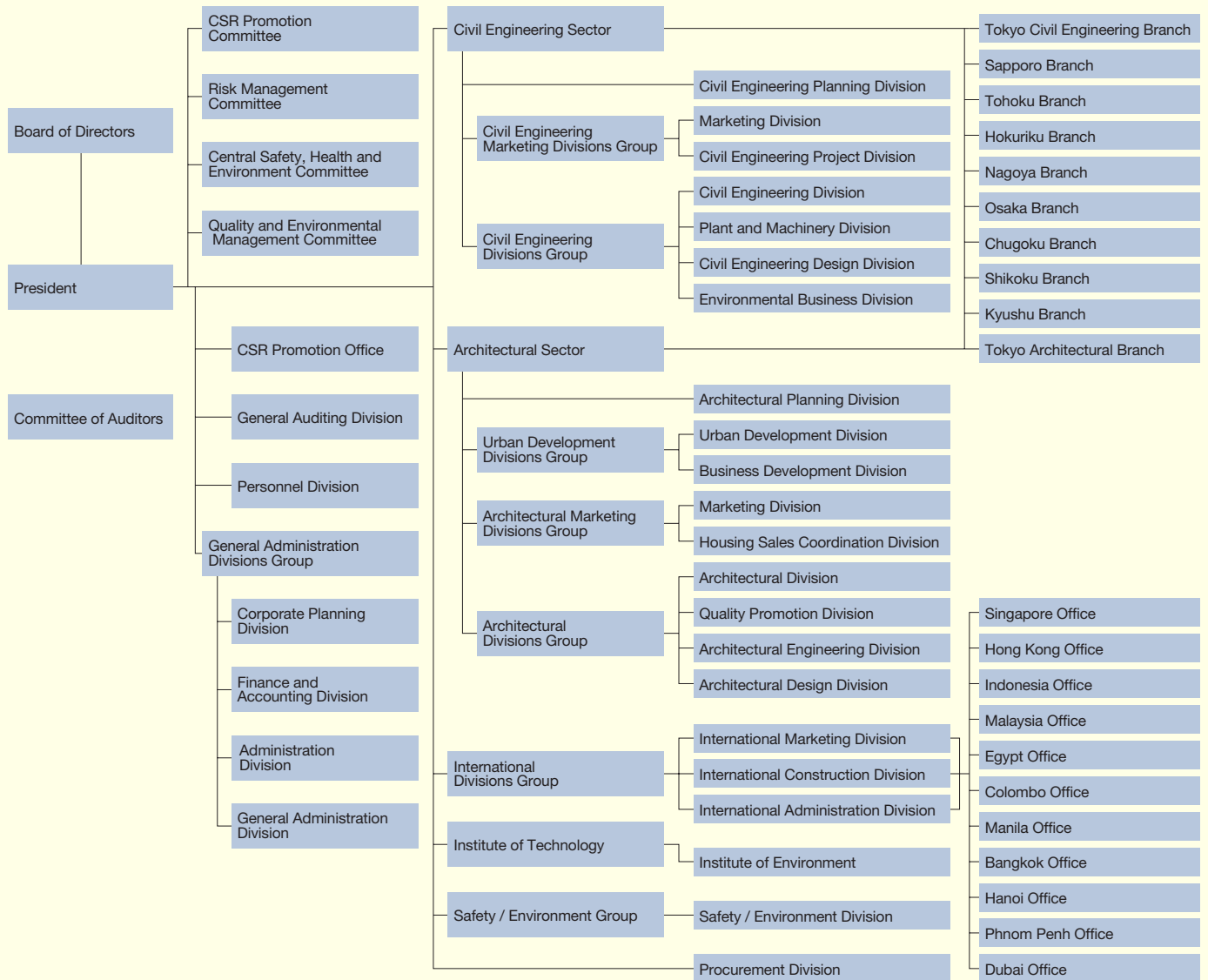
Consolidated Subsidiaries

Penta-Ocean Dredging Co., Ltd.	Koto-ku, Tokyo, Japan
Yoshin Construction Co., Ltd.	Hiroshima, Japan
Kyushu Yoshin Construction Co., Ltd.	Fukuoka, Japan
Penta Builders Corporation	Shinjuku-ku, Tokyo, Japan
Obama Marine Co., Ltd.	Unzen, Nagasaki, Japan
Kegoya Dock Co., Ltd.	Kure, Hiroshima, Japan
Penta Techno Service Co., Ltd.	Nasushiobara, Tochigi, Japan
Sand Techno Co., Ltd.	Ichikawa, Chiba, Japan
Domi Environmental Solutions	Bunkyo-ku, Tokyo, Japan
Penta Insurance Service Co., Ltd.	Chiyoda-ku, Tokyo, Japan
Penta-Ocean Construction (Malaysia) SDN. BHD.	Malaysia
Siam Goyo Co., Ltd.	Thailand
Thai Penta-Ocean Co., Ltd.	Thailand
Penta-Ocean Construction (Hong Kong) Ltd.	Hong Kong
Nicosia Co., Ltd.	Hong Kong
Brichwood Co., Ltd.	Hong Kong
Penta-Ocean Dredging Panama Inc.	Panama
Cosmo Transport Panama Inc.	Panama
Gloria Transport Inc.	Panama
Reina Del Mar Transport Inc.	Panama
Viento Del Mar Transport Inc.	Panama
Belleza Del Mar Transport Inc.	Panama
Sol Del Mar Transport Inc.	Panama
Angkutlaut Ltd.	Malaysia
Penta-Ocean Technology Information Advisory (Shenzhen) Ltd.	China

Consolidated Affiliates

Jiwat Co., Ltd.	Sendai, Miyagi, Japan
Haneda Airport International Airline Apron PFI	Shinjuku-ku, Tokyo, Japan

Organization Chart



(As of April 1, 2008)

Investor Information

(As of March 31, 2008)

Head Office	Penta-Ocean Construction Co., Ltd. 2-8, Koraku 2-chome, Bunkyo-ku, Tokyo 112-8576, Japan Telephone: 81-3-3817-7181 Facsimile: 81-3-3817-7642
Established	April 1896
Financial Year	April 1 to March 31
Common Stock	Authorized: 599,135,000 Issued: 245,763,910
Stock Listing	Tokyo, Nagoya and Osaka Stock Exchanges, First Section
Shareholders	50,871
Transfer Agency	Mizuho Trust & Banking Co., Ltd. 2-1, Yaesu 1-chome, Chuo-ku, Tokyo 103-8670, Japan

Major Shareholders

Shareholders	Shares held (thousands)	Voting right ratio (%)
Mizuho Corporate Bank, Ltd.	7,059	2.9
Japan Trustee Service Bank, Ltd. (Trust Account)	6,731	2.7
Meiji Yasuda Life Insurance Co.	6,656	2.7
Sompo Japan Insurance Inc.	6,113	2.5
The Master Trust Bank of Japan (Trust Account)	5,048	2.1
Bank of New York GCM Client Accounts JPRD ISG (FE-AC)	4,603	1.9
Shoei Co., Ltd.	4,119	1.7
Tokyo Marine & Nichido Fire Insurance Co., Ltd.	3,934	1.6
Mizuho Trust & Banking Co., Ltd.	3,470	1.4
Japan Trustee Services Bank, Ltd. (Trust Account)	3,250	1.3