



## Main Data

Builder	Kegoya Dock Japan
Year of Built	1995 (Rebuilt)
Displacement Tonnage	2,140 ton
Length (b.p.)	58.0 m
Breadth (mld.)	21.0 m
Depth (mld.)	3.75 m
Maximum Draught	2.2 m
Total Installed Power	2,380 kW

## Crane Operation

Crane Capacity	200 ton x 14.0 m
----------------	------------------

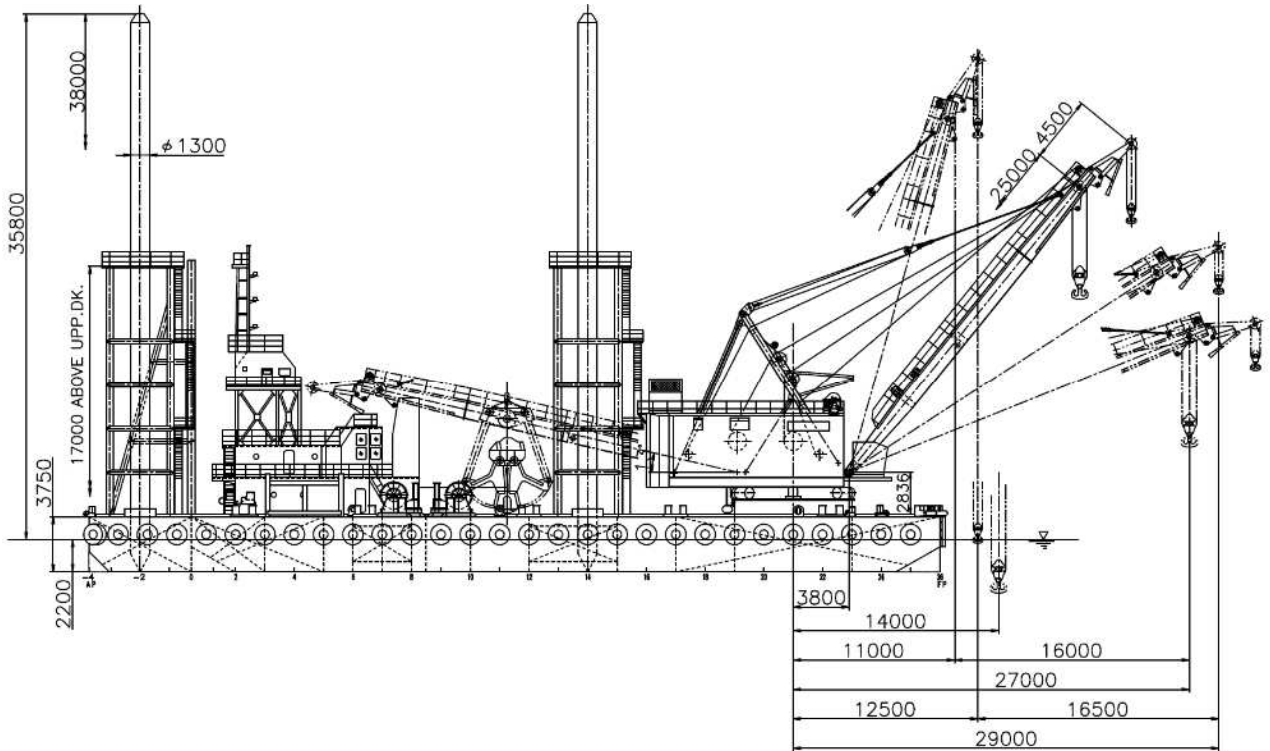
## Piling Work

Leader High (upper water level)	50.0 mm
Maximum Pile Size	φ 1,600 x 40 m (upper W.L.)
Maximum Pile Weight	40.0 ton
Hammer	IHC S-200 ~ NH-150B

## Grub Dredging

Maximum Dredging Depth	50.0 m
Grab Capacity	20.0 m <sup>3</sup>
Rock Breaker Weight	40.0 ton

**Crane Operation**



**Piling Work**

