

Corporate History

– A Glimpse at the Yesteryears of Penta-Ocean Construction

Phase I

From foundation to development

Phase II

Recovery from WW2, overseas expansion and development in land civil engineering

Phase III

Evolving into a general contractor by strengthening our building construction abilities

1896



Mr. Jinjiro Mizuno founded Mizuno-Gumi (1896)

1950

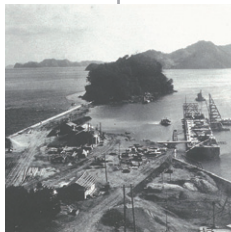


Contract awarded for construction of coastal industrial zone for Nippon Kokan Kabushiki Kaisha (currently JFE Engineering) in Fukuyama Prefecture (1961)

Stock listed on the Second Section of the Tokyo Stock Exchange (1962)

Stock listed on the First Section of the Tokyo Stock Exchange (1964)

1960



Contract awarded for construction of first large-scale quay walls and industrial facilities in the postwar era in Tsukumi Port, Oita Prefecture (1948)

1970



Contract awarded for Suez Canal reconstruction (1961)

Contract awarded for Suez Canal deepening and widening (1974)

1980



Contract awarded for reclamation work on Jurong Island, Tuas View Extension (1984)

1990



Completion of the World Cargo Distribution Center (1993)

1996



Celebrated 100th anniversary of the Company's founding (1996)



The company renamed Goyo Kensetsu, and named Penta Ocean Construction Co., Ltd. in English (1967)



Contract awarded for phase I of construction of an artificial island for Kansai International Airport (1986)

Contract awarded for phase II of construction of an artificial island for Kansai International Airport (1999)



Completion of New Institute of Technology in Nasushiobara City, Tochigi Prefecture (1994)

Historical Events

1896

First modern Olympic Games (1896)

Great Kanto Earthquake (1923)

World War 2 (1939-1945)

Arab- Israeli Conflict (1948-1973)

1950

1960

Completion of Tokyo Tower (1958)

Launch of the Tokaido Shinkansen (1964)

1964 Summer Tokyo Olympic Games (1964)

1970

Full opening of Tomei Expressway (1969)

First Oil Crisis (1973)

1980

Second Oil Crisis (1979)

1990

Launch of the Tohoku Shinkansen (1982)

The Plaza Accord (and consequent drastic appreciation of the Yen) (1985)

1996

Great Hanshin Earthquake (1995)

Sarin Gas Attack on Tokyo Subway (1995)

Since our foundation as Mizuno-Gumi for marine civil engineering, we have expanded our business horizons through various endeavors. While embarking on overseas ventures well in advance of our competitors, undertaking land civil engineering works, including the construction of tunnels and subways, and building construction works for logistics facilities and large hospitals, we have preserved a vigorous spirit for taking on new challenges in our corporate DNA. Having taken all obstacles and setbacks in our stride, we have a strong conviction that we can further enhance our contribution to society both in Japan and overseas.

Phase IV

Evolution and advancement

2000



Completion of Esplanade-Theatres on the Bay in Singapore (2002)



Self-propelling trailing suction hopper dredger, "QUEEN OF PENTA-OCEAN", (currently ANDROMEDA V) put into commission in Singapore (1999)



Completion of Kogouchi Tunnel of New Tomei Expressway (2005)

2010



Completion of MAZDA Zoom-Zoom Stadium Hiroshima (2009)



Opening of D-Runway of Tokyo International Airport (2010)



Completion of ION Orchard, and the Orchard Residence in Singapore (2010)



Completion of a large-scale self-propelled multi-purpose working vessel, "CP-5001" (2012)



Completion of a self-propelled cutter suction dredger, "CASSIOPEIA V" (2014)



Completion of Kure City Hall (2015)

2020



Completion of Sengkang Integrated Hospital in Singapore (2018)

2000

Adoption of the Kyoto Protocol (1997)

Nagano Olympic Winter Games (1998)

September 11 attacks, USA (2001)

Iraq War (2003)

"EXPO 2005 Aichi", Japan World Exposition (2005)

2010

Bankruptcy of Lehman Brothers (2008)

Great East Japan Earthquake (2011)

2020

Implementation of "Abenomics", Prime Minister Abe's economic stimulus package (2013)

Tokyo Olympic and Paralympic Games are scheduled to be held (2020)