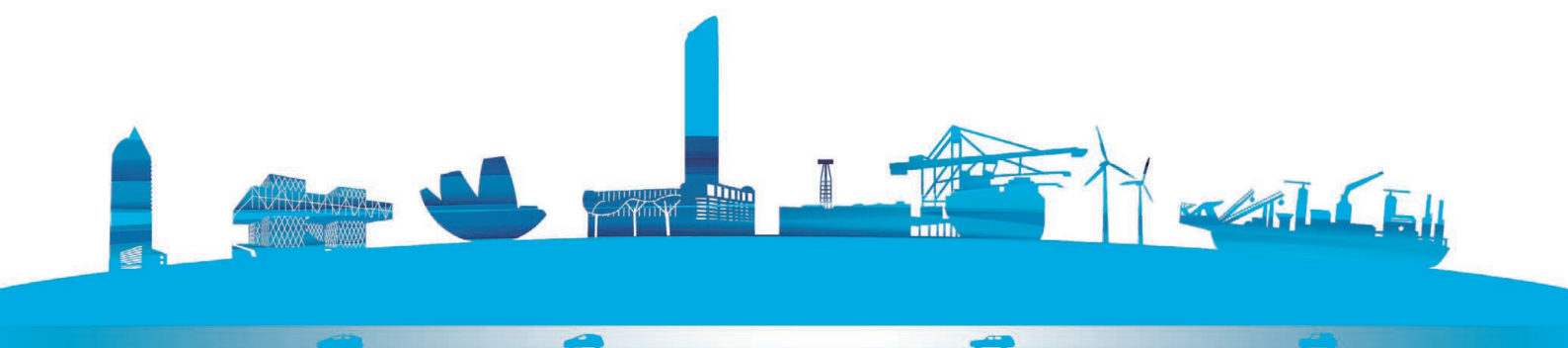




GOING FURTHER

その先の向こうへ



Penta-Ocean Construction Annual Report 2015

Year Ended March 31, 2015



GOING FURTHER

その先の向こうへ

Since its establishment in 1896 in Kure city, Hiroshima prefecture, Penta-Ocean Construction Co., Ltd. has grown with society by contributing an enterprising, up-and-coming spirit and leading-edge construction technologies. Today, after our founding, a mentality of continually seeking challenges in new fields remains part of our corporate DNA. A spirit of accepting challenges that never varies, even as times change, and the power of flexible self-innovation to respond to the needs of each new era. At Penta-Ocean, we are never satisfied with things as they are, and we continue to move steadily forward, step by step.

Corporate Policy



Corporate Visions

“Creative” company for land and sea

As a leading contractor in coastal and waterfront areas, we seek to create attractive environments and pursue customer satisfaction and social contribution as an engineering-oriented company.

“Committed” company guaranteeing solid quality

We build trustful relationships with our customers and society through providing high quality workmanship and safe products backed by solid technologies.

“Future-oriented” company creating rich environments for the future generations

We establish quality and nurture rich environments throughout the course of our corporate activities and pass on our dreams, hopes and possibilities to the next generations.

Contents

Corporate History	1	Corporate Governance / Compliance	16
Consolidated Financial Highlights	2	Occupational Safety and Health	17
Message from the President	4	CSR Activities	18
Medium-Term Management Plan	6	Consolidated Financial Statements	19
Completed Projects for Regional Development	8	Non-Consolidated Financial Statements	51
Special Feature	11	Company Data	55