

COMPANY DATA

(As of March 31, 2010)

Company Outline

Company Name	Penta-Ocean Construction Co., Ltd.
Established	April 1896
Head Office	2-8, Koraku 2-chome, Bunkyo-ku, Tokyo 112-8576, Japan Tel: 81-3-3817-7181 Fax: 81-3-3817-7642
Paid-in Capital	¥28,070 million (US\$301.7 million)
Employees	2,674
Website	www.penta-ocean.co.jp

Board of Directors and Auditors

(As of June 29, 2010)

President and Representative Director		
Yoshio Murashige		
Representative Director		
Hayuru Tsuda		
Directors		
Kiyoshi Ida	Kosuke Kondo	Yoshihisa Takimoto
Sumio Yamashita	Kunihiko Sasaki	Shin Shiotani*
Corporate Auditors		
Hirosuke Kawamoto	Terumi Tawara	Kaoru Kurokawa*
Masatami Sasano*	Kazunori Kameyama*	

* Indicates an external director or external corporate auditor

Penta-Ocean Construction Group

Consolidated Subsidiaries

Penta-Ocean Dredging Co., Ltd.	Tokyo, Japan
Yoshin Construction Co., Ltd.	Hiroshima, Japan
Penta Builders Corporation	Tokyo, Japan
Obama Marine Co., Ltd.	Nagasaki, Japan
Coast Creation General Corporation Aggregate	Tokyo, Japan
New Port development LLC	Tokyo, Japan
Kegoya Dock Co., Ltd.	Hiroshima, Japan
Penta Techno Service Co., Ltd.	Tochigi, Japan
Sand Techno Co., Ltd.	Chiba, Japan
Domi Environmental Solutions	Tokyo, Japan
Penta Insurance Services Co., Ltd.	Tokyo, Japan
Jaiwat Co., Ltd.	Miyagi, Japan
Penta-Ocean (Malaysia) SDN. BHD.	Malaysia
Siam Goyo Co., Ltd.	Thailand
Thai Penta-Ocean Co., Ltd.	Thailand
Penta-Ocean Construction (Hong Kong) Ltd.	Hong Kong
Nicosia Co., Ltd.	Hong Kong
Brichwood Co., Ltd.	Hong Kong

Penta-Ocean Dredging Panama Inc.	Panama
Cosmo Transport Panama Inc.	Panama
Gloria Transport Inc.	Panama
Reina Del Mar Transport Inc.	Panama
Vient Del Mar Transport Inc.	Panama
Belleza Del Mar Transport Inc.	Panama
Sol Del Mar Transport Inc.	Panama
Angkutlaut Ltd.	Malaysia
Penta-Ocean Technology Information Advisory (Shenzhen) Ltd.	China

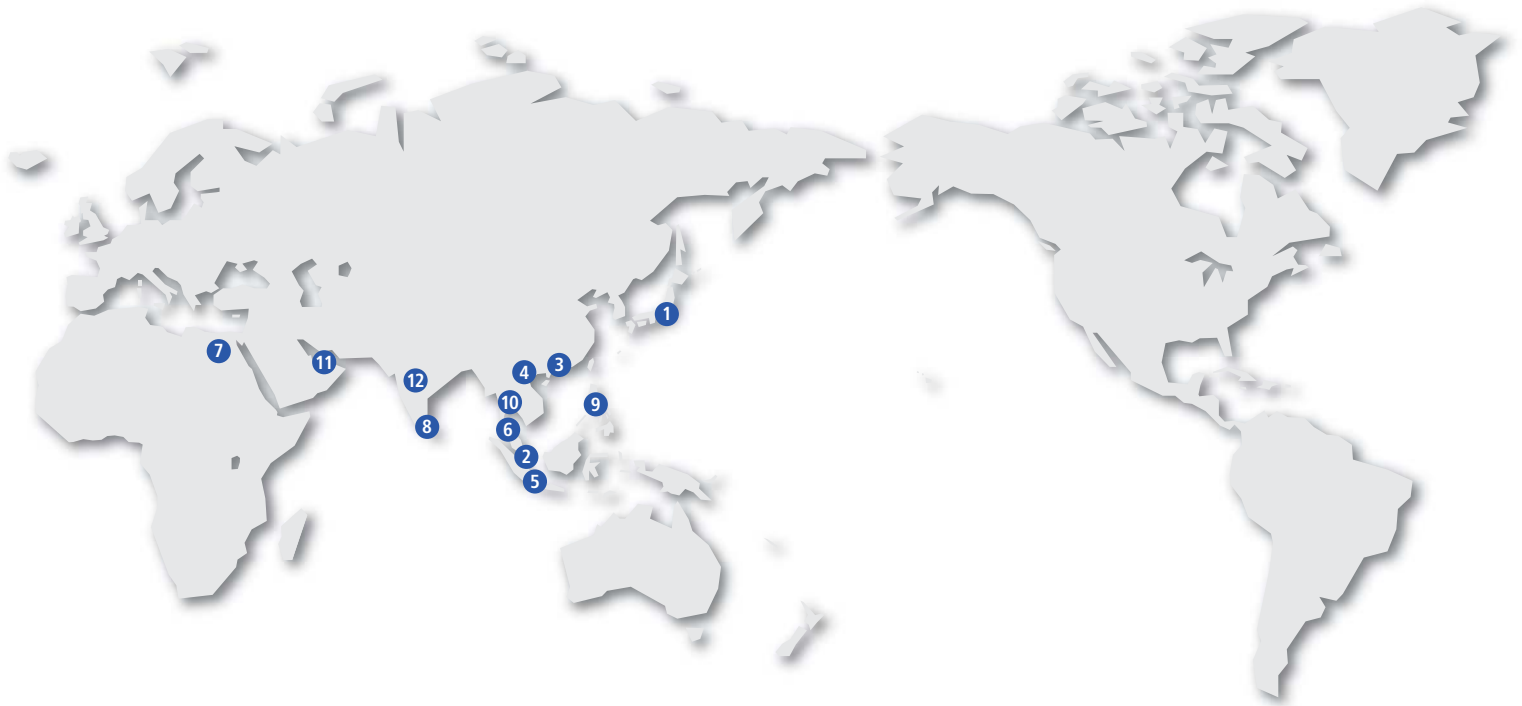
Equity Affiliates

Haneda Airport International Airline Apron PFI	Tokyo, Japan
Miyajima Aqua Partners Co., Ltd.	Hiroshima, Japan
Chuo Marine Industries Co., Ltd.	Tokyo, Japan

Non-Equity Affiliate

Matsuyama Environmental Technology Co., Ltd.	Ehime, Japan
---	--------------

Penta-Ocean Construction Network



1 HEAD OFFICE

2-8, Koraku 2-chome, Bunkyo-ku, Tokyo 112-8576, Japan
Tel: 81-3-3817-7181 Fax: 81-3-3817-7642

2 SINGAPORE OFFICE

1 Kim Seng Promenade #13-01/02, Great World City, East Tower,
Singapore 237994
Tel: 65-6338-8966 Fax: 65-6337-0987

3 HONG KONG OFFICE

Unit 601, K Wah Center, 191 Java Road, North Point,
Hong Kong
Tel: 852-2833-1098 Fax: 852-2572-4080

4 VIETNAM OFFICE

4th Floor, 18 Tran Hung Dao Street, Hanoi, Vietnam
Tel: 84-4-824-1360 Fax: 84-4-824-1444

5 INDONESIA OFFICE

Mid Plaza II, 24th Floor, Jl. Jenderal Sudirman Kav. 10-11,
Jakarta 10220, Indonesia
Tel: 62-21-570-5484 Fax: 62-21-570-5485

6 MALAYSIA OFFICE

508, 5th Floor, Block A, Kelana Business Centre 97, Jalan SS 7/2,
Kelana Jaya, 47301 Petaling Jaya, Selangor Darul Ehsan, Malaysia
Tel: 60-3-7492-2208 Fax: 60-3-7492-2209

7 EGYPT OFFICE

27 El Falah Street, off Shehab Street, Flat No. 5, 2nd Floor,
Mohandeseen, Giza, Egypt
Tel: 20-2-3345-3207 Fax: 20-2-3345-3206

8 COLOMBO OFFICE

P.O. Box 383, No. 3-2, CBM House No. 2A, Lake Drive,
Colombo 8, Sri Lanka
Tel: 94-11-2690316 Fax: 94-11-2671944

9 MANILA OFFICE

Unit A1, 2nd Floor Almeda Arcade, 1014 Pasay Road,
Makati City, Philippines
Tel: 63-2-752-8997 Fax: 63-2-752-8996

10 BANGKOK OFFICE

11th Floor, Room 1106, Vanit II Building, 1126/2, New Petchburi
Road, Makkasan Rajthevee, Bangkok 10400, Thailand
Tel: 66-2-655-2183 Fax: 66-2-655-2185

11 DUBAI OFFICE

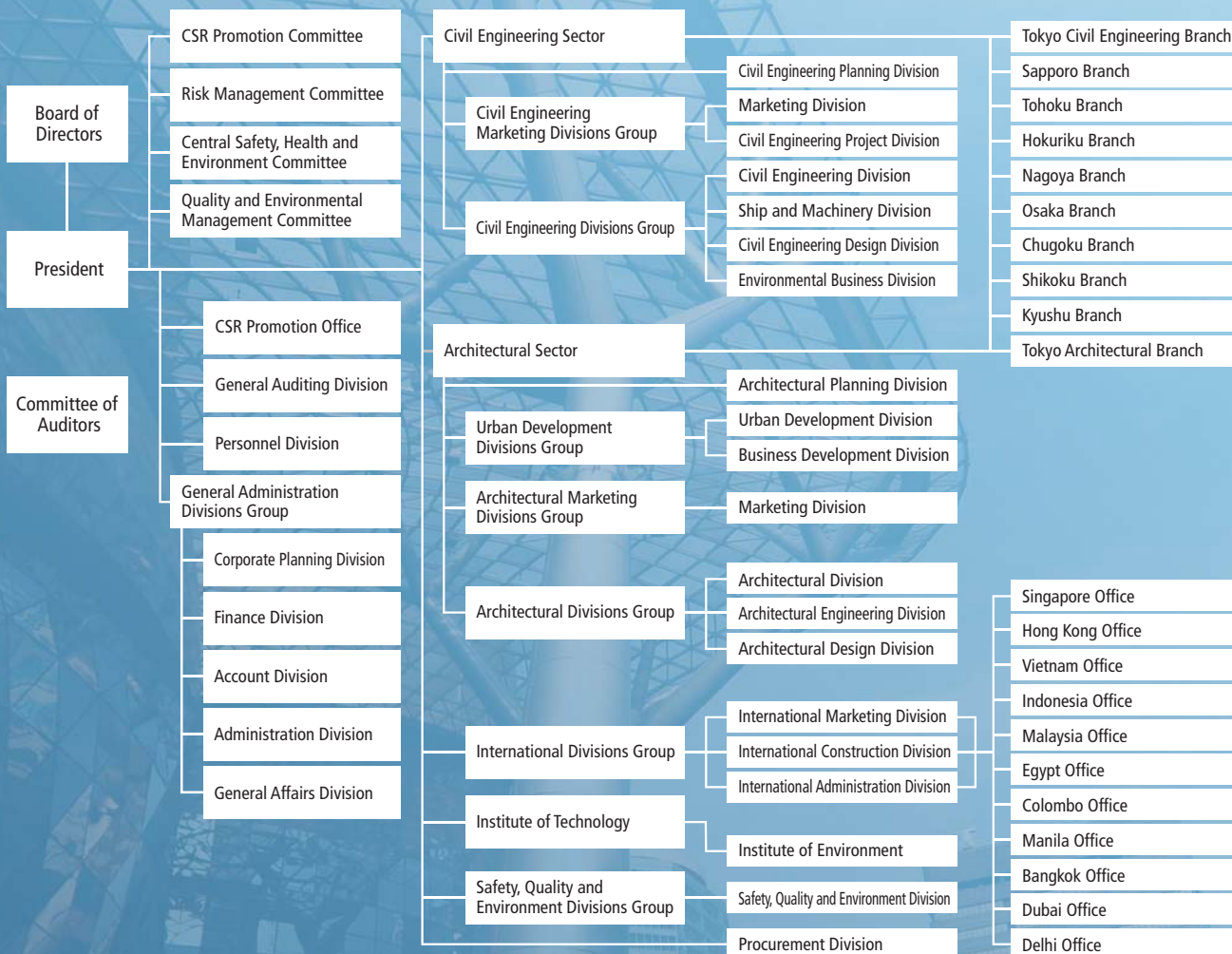
P.O. Box 118791, Unit 317, Al Attar Shopping Mall, Karama,
Dubai, U.A.E.
Tel: 971-4-335-8741 Fax: 971-4-335-8742

12 DELHI OFFICE

No. 402, 4th Floor, Time Tower, Mehrauli Gurgaon Road,
Gurgaon-122002, Haryana, India

Organization Chart

(As of July 1, 2010)



Investor Information

(As of March 31, 2010)

Fiscal Year	March 31 of each year
Common Stock	Authorized: 599,135,000 Issued: 245,763,910
Stock Listing	First Section of the Tokyo and Nagoya Stock Exchanges
Shareholders	45,179
Transfer Agency	Mizuho Trust & Banking Co., Ltd. 2-8-4, Izumi, Suginami-ku, Tokyo 168-8507, Japan

Major Shareholders

Shareholders	Shares held (thousands)	Voting right ratio (%)
Japan Trustee Services Bank, Ltd. (Trust Account)	14,015	5.7
Mizuho Corporate Bank, Ltd.	7,059	2.9
Meiji Yasuda Life Insurance Co.	6,656	2.7
The Master Trust Bank of Japan (Trust Account)	6,407	2.6
Sompo Japan Insurance Inc.	6,113	2.5
CBNY DFA INT'L CAP VALUE PORTFOLIO	4,144	1.7
Penta-Ocean Employee Stock Ownership Plan	4,100	1.7
Tokio Marine & Nichido Fire Insurance Co., Ltd.	3,934	1.6
Mizuho Trust & Banking Co., Ltd.	3,470	1.4
The Hiroshima Bank, Ltd.	2,546	1.0